

APRIL 2026

Bowral & District Hospital Redevelopment Newsletter

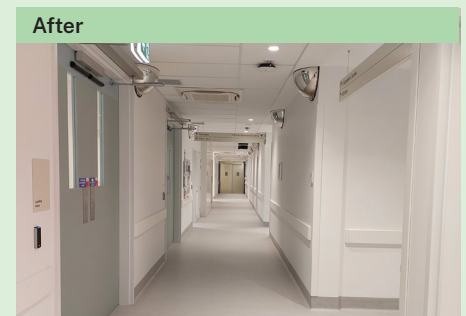
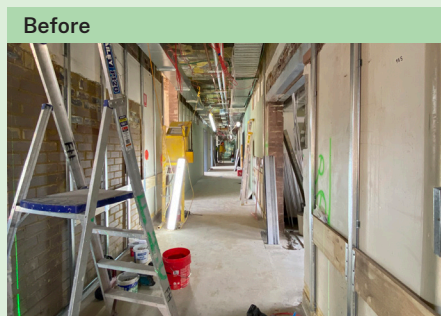
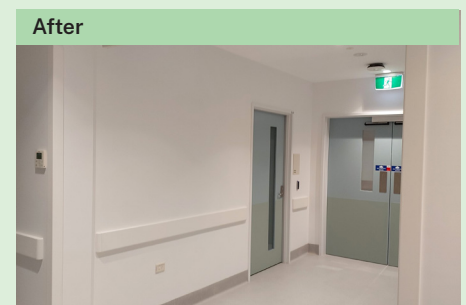
The new General Services Building is open for business

What a transformation!

At the end of winter last year, the Watson building had recently been demolished, and the internal demolition of Milton Park's ground floor had just commenced.

A short six months later the transformation of the former maternity ward on the ground floor into a modern loading dock and back-of-house engine room is complete!

The new mortuary is operational, the Transfer of Care, Digital Health and HealthShare teams have moved in, and all deliveries are now received via the new loading dock.



The new General Services Building loading dock zone is reserved for delivery trucks and vans bringing essential items to our hospital.



No car parking or pedestrian activity is allowed in the loading dock zone.

A pedestrian crossing marks the safe pathway across the entry to the loading dock.

These controls are in place to ensure the safety of all staff and visitors.



A comforting space for families

A key element of the new mortuary zone is the family room, an important space for bereaved families.

Melinda Kalde is the Social Work Head of Department at Bowral & District Hospital where the team provides a broad range of support for patients and families.

“The family room is a warm and comforting safe space where families can be together and support each other,” Melinda said.

“If someone feels overwhelmed, or just needs a bit of space, they can take a moment in the family room without having to go back out into the busy hospital,” Melinda added.

Acting Redevelopment Manager Alyssa Hatcher said a great deal of thought and consideration had gone into the design to ensure that families felt comforted in the space.

“The intention is to provide a safe, quiet space where families can be together at the saddest of times,” Alyssa added.

The new family and viewing rooms feature a number of seating options, a small beverage bay with tea & coffee making facilities, an accessible bathroom and a beautiful original artwork by local artist Lily Cummins that brings a calming sense of peace in a sombre space.



Decommissioning and demolition



Now that the hospital’s new mortuary is operational, the almost 100-year-old former mortuary is being decommissioned in preparation for demolition.

Site fencing has been erected to enclose a number of buildings at the back of the campus assessed as no longer fit-for-purpose.

The demolition zone is adjacent to the NSW Ambulance station and the rear access path to the Outpatient Centre. It extends to include the former Equipment Loan Pool and the Stores buildings.

The demolition is expected to be completed in the coming weeks. There will be spotters on site to ensure the safe movement of patients, visitors and staff in the adjacent spaces whilst demolition machinery is in use.

As with all the demolition works completed as part of the Stage 2 Redevelopment, our construction partners reuse or recycle materials wherever possible to minimise the volume of waste going to landfill.



OC ramp and roadway work

Construction work on and around the entrance ramp to the Outpatient Centre (OC) is underway to improve pedestrian and traffic safety in this shared zone.

A year on from opening the new building and after a number of bumped bollards, it was clear that some adjustments were required to improve the flow of traffic near the ramp entry.

During these important works the entrance ramp will be closed. Patients and staff are asked to use the NSW

Pathology entrance to the left of the OC ramp or the OC rear entrance, accessed via the carpark off Ascot Road.

Accessible parking and a drop off zone are available at the rear of the OC.

When visiting the hospital or OC, please be alert to the construction works occurring on and around the ramped access to the OC and follow the directions of traffic controllers and signage on site.

Works are expected to be completed in early May - weather permitting.



OC Rear entrance off Ascot Road



Pathology entrance off Mona Road

Berms - mounds with a purpose

Extensive ground works were required to ensure the stability and adequate drainage of the ground beneath the new loading dock forecourt.

Consequently, a number of raised mounds of excess soil are now available onsite for reuse to support drainage works in and around the rear of the Outpatient Centre and General Services Building.

These raised mounds, or berms, will serve both a practical and aesthetic purpose. Not only will they complement the existing drainage systems, but they will also help with controlling water flow and erosion. Over time they will become a new habitat for various plants, insects, and birds on campus and provide welcomed green space for staff to enjoy.



Bowral Street Roadworks

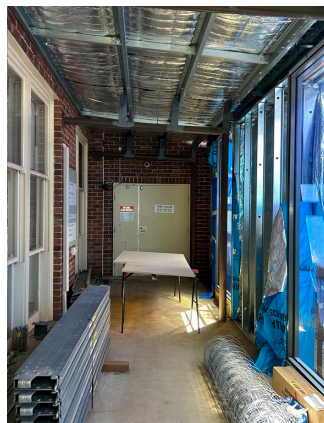
Wingecarribee Shire Council is undertaking night resurfacing works on a section of Bowral Street directly outside Bowral & District Hospital.

Work is expected to continue through until early May (weather permitting).

Access to the hospital, buses and emergency services will be maintained at all times during the works.

More information can be found on the Council website at <https://www.wsc.nsw.gov.au/Council/Projects-and-Capital-Works/Bowral-Street-Road-Renewals>

Art in the space



Following an expression of interest process earlier in the Stage 2 Redevelopment, two local artists were selected to provide works for key locations in the General Services Building and Outpatient Centre.

One of those locations is the 'Staff Only' linkway which was once the veranda on the former Milton Park building.

A number of artworks by local artist Nafisa have been reproduced in large format vinyl to deliver a vibrant punch of colour for staff traversing the linkway.



Autumn colours

The crisp chill we're feeling in the morning is a sure sign that autumn is here!

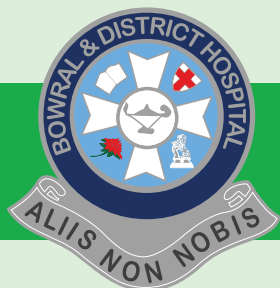
Many of the trees across the campus are deciduous and at this time of the year they give their last hurrah of colour before shedding their leaves for winter.

The camellias and azaleas are also showing off their colourful blooms.



Acknowledgement of Country

Bowral & District Hospital stands proudly on Gundungurra land. We acknowledge and pay respect to the peoples of the Dharawal and Gundungurra Nations, the traditional custodians of this land. Bowral & District Hospital staff and community will continue to be "Taking Care of Country".



For more information:

Visit www.swslhd.health.nsw.gov.au/bowral/redevelopment.html

Contact our team on 4861 0200 or 4861 0281 Email SWSLHD-BowralHospitalRedevelopment@health.nsw.gov.au

