



Stage 2 Redevelopment

March 2025

Upcoming Community Information Day

Come and join us for a peek inside the new Bowral & District Hospital Outpatient Centre (OC) at our Community Open Day on Saturday, 5 April.

This exciting event is a one-off chance to explore our brand-new OC. Enjoy guided tours, refreshments, and interactive community health stalls.

Visit <https://bit.ly/4kKbC7M> or scan the QR code to book a tour.



Community Open Day



Book a tour of the new Outpatient Centre, view the fantastic new artworks, and admire some of the historical elements we've retained in this contemporary new clinical space!

Saturday, 5 April, 9.00am - 1.00pm
103 Bowral Street, Bowral

Book your tour

Phase 1 complete

The opening of the OC marks the completion of Phase 1.

We welcomed our first patients in the OC, the centrepiece of the Stage 2 Redevelopment, on Tuesday 4 March. The OC consolidates our medical, nursing and allied health outpatient clinics from multiple locations across the campus into a single, centrally located hub.

We are incredibly proud to be providing contemporary health care and support for the community in this beautiful 1930s era building. The OC provides a range of services to ensure the Southern Highlands community can receive timely access

to outpatient services that are patient focused and close to home.

Services now operating from the OC include:

- Cardiac assessment unit
- Dietetics
- Equipment Loan Pool
- Gymnasium
- High risk podiatry
- Medical specialty clinics
- NSW Pathology
- Occupational Therapy
- Outpatient clinics
- Physiotherapy
- Renal Dialysis
- Specialty Nurses
- Speech Therapy
- Social Work





Construction update

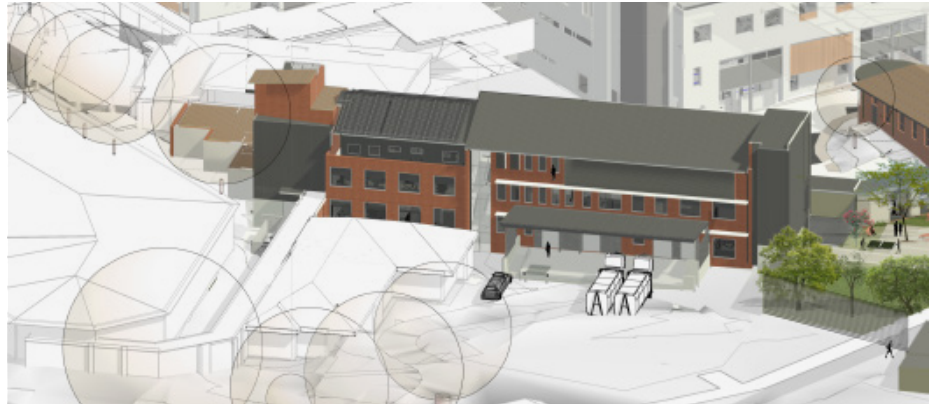
Phase 2 works in progress

Phase 2 of the redevelopment involves the transformation of the former Milton Park from a 1960s-era hospital building into a modern back-of-house hub, the new **General Services Building (GSB)**.

With the recent completion and opening of the OC, construction focus now shifts to the demolition of the former Watson building and the completion of the external linkway connecting the OC with the new GSB and the Clinical Services Building (CSB).

The ground floor of Milton Park currently forms a crucial link in the temporary route used by back-of-house teams moving supplies and meals to and from the CSB. Opening the new external linkway and changing the route taken by these teams will allow our construction partners Donnelley Constructions to commence works on the ground floor and progress the next phase of the redevelopment.

These works in and around Milton Park provide the most visually striking evidence of the changes on campus with the partial demolition of the eastern end completed in late 2024. The footprint of the remaining part of



the building will grow in the coming months with the demolition of the Watson Building clearing the way for progress on the new loading dock and vehicle turning circle on the southern side of the GSB.

The **Aboriginal Dreaming Garden** continues to evolve and we will be erecting site fencing shortly as we prepare for the commencement of ground works for the new yarning structure.

We will continue to update the community in our regular redevelopment newsletter and on our facebook page as we progress this important part of the project. Visit <https://bit.ly/BOWREDEV> to stay up to date and subscribe to our newsletter.



Our ongoing commitment to our neighbours.

We acknowledge there may be some increased noise and changes to traffic due to the redevelopment work to upgrade the hospital and apologise for any inconvenience caused.

Construction works are scheduled between 7am and 6pm Monday to Friday and 8am to 1pm on Saturdays. There are no works on Sundays or Public Holidays. Any planned works outside of these hours will be

communicated in advance.

Thank you for your continuing patience and support as we progress this important project.

Please get in touch for more information or if you'd like to make an appointment to speak with one of the team.

Call 02 4861 0281 or email SWSLHD-bowralhospitalredevelopment@health.nsw.gov.au

You can also visit <https://bit.ly/BOWREDEV>

Acknowledgement of Country

Bowral & District Hospital stands proudly on Gundungurra land. We acknowledge and pay respect to the peoples of the Dharawal and Gundungurra Nations, the traditional custodians of this land. Bowral & District Hospital staff and community continue to be "Taking Care of Country".

