



THE REDEVELOPMENT project team has recently welcomed its newest team member.

Vanessa Ezzy, a Bowral and District Hospital perioperative clinical nurse educator with more than 22 years of experience, has been appointed as the Project Manager for operational commissioning.

In this role, Vanessa will oversee and implement all aspects of the hospital redevelopment commissioning program to ensure an efficient and timely transition into the new clinical services building.

The role manages the implementation of new clinical models of care, policy and guidelines, along with clinical risk management and compliance with facility, district and external stakeholder requirements.

“I have been interested in this project since first word of a redevelopment was generated on the clinical floor,” she said.

“I have already gained so much valuable experience in regards to project management during my short time on the team and I am

hopeful to learn and grow in this role to reinstate that information into future projects.”

Vanessa’s role is critical to ensuring operational readiness for the new facility.

Her day-to-day work will involve developing program schedules, end of state planning, and troubleshooting unexpected issues.

This includes identifying opportunities for workplace improvements and the introduction of evolving models of care to achieve the best outcomes for patients and staff in a modern and contemporary health care environment.

“I love working in health and feel privileged to be able to make a difference in someone’s life. I look forward to working with our current and future health care professionals in an exciting and dynamic new facility. I’m excited to be involved in such a dynamic project and team.”

DID YOU KNOW?

The Bowral and District Hospital Stage 1 redevelopment project has significantly supported the local youth workforce by designating more than 90,000 work hours to apprentices and persons in training!



For more information:

Visit www.swslhd.health.nsw.gov.au/bowral/redevelopment.html

Contact our team on 4861 0200 or 4861 0281

Email SWSLHD-BowralHospitalRedevelopment@health.nsw.gov.au

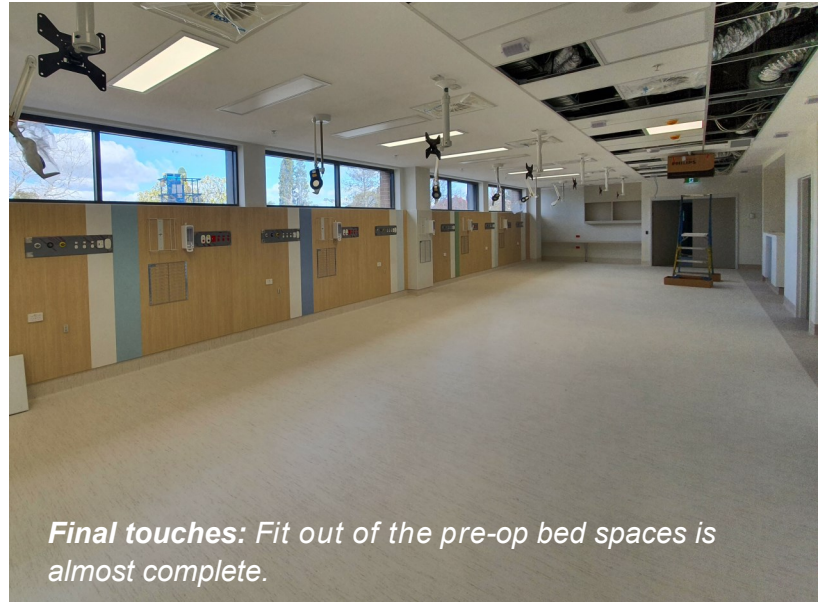
THERE'S EXCITEMENT in the air as the Stage 1 Bowral and District Hospital redevelopment gets closer to completion, with the new clinical services building on track to be operational by the end of the year.

With construction all but finished, the current focus is on fit out of spaces in readiness for handover to the facility for operational commissioning. The Emergency Department and staff stations are now almost complete, and the ground floor gymnasium is also being prepared for the installation of equipment.

Other works include commissioning and testing of plant equipment, wayfinding and other signage, as well as landscaping around the new building.

The delivery of Stage 1 also includes the construction of vacant shell space on Levels 2 and 3, supporting expansion of hospital services into the future.

And check out the pitch perfect views of Bradman Oval and Mt Gibraltar (below) from the first floor inpatient wards.



Final touches: Fit out of the pre-op bed spaces is almost complete.



Two's company: Double patient room awaits fit out.



Room with a view: Inpatient and critical care outlook.



Rehab: Bowral's new inpatient gym.

For more information:

Visit www.swslhd.health.nsw.gov.au/bowral/redevelopment.html

Contact our team on 4861 0200 or 4861 0281

Email SWSLHD-BowralHospitalRedevelopment@health.nsw.gov.au



ONCE COMPLETE, the new Bowral and District Hospital will pay homage to its serene and breathtaking surroundings by reflecting the essence of the Highlands across every room, on every floor of the new clinical services building (CSB).

The building's interior and exterior design, along with the materials used, were inspired by the array of colours of Bowral and surrounds, offering a natural lightshow of tones and dews that reflect the region.

The furniture and fittings will also support the vision for the new CSB by bringing the space to life through texture.

And to complement the design strategy, the winning images from this year's Colours of the Highlands photo competition will be displayed on each floor of the new building, further showcasing the natural beauty of the area.



OUR HOSPITAL redevelopment project is targeting a Green Star sustainability benchmark, with a range of environmentally sustainable design initiatives incorporated into the new clinical services building.

The building design elements, including double-glazed windows, air conditioning and lighting, have already demonstrated a potential 10.3% energy efficiency improvement over the Building Code of Australia's minimum compliance energy efficiency model.

FUN FACT

A total of 14,802 furniture, fittings and equipment (FF&E) items will have been acquired in readiness for when the new clinical services building becomes operational, including:

- 311 small rubbish bins
- 301 soap dispensers
- 161 glove dispensers
- 243 nurse call buzzers
- 236 coat hooks
- 796 double power points

For more information:

Visit www.swslhd.health.nsw.gov.au/bowral/redevelopment.html

Contact our team on 4861 0200 or 4861 0281

Email SWSLHD-BowralHospitalRedevelopment@health.nsw.gov.au