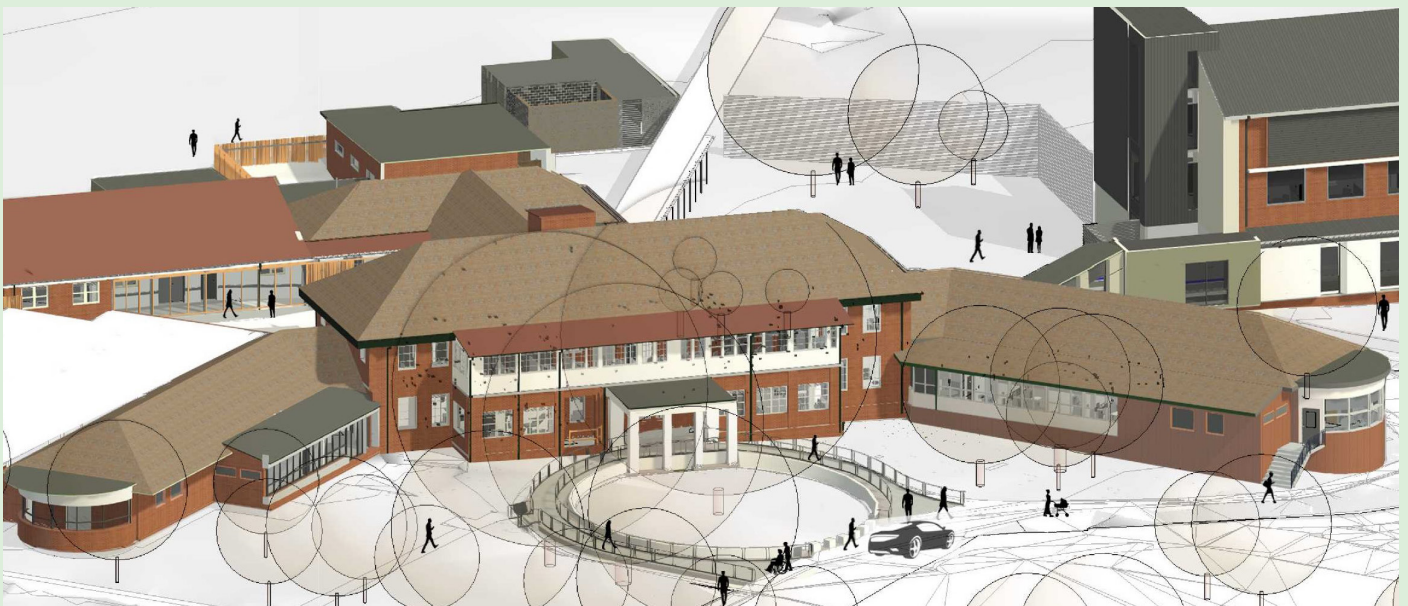


JULY 2024

Bowral & District Hospital Redevelopment Newsletter

Progress on the Stage 2 Redevelopment



Artist's impression of the completed Outpatient Centre

The \$55 million Stage 2 redevelopment of Bowral & District Hospital is making excellent progress, and despite some adverse weather at times, there has been plenty of activity on site.

Our new Outpatient Centre (OC) will be located in the refurbished former administration building.

Hospital General Manager Bradley Warner said the building sat prominently on the eastern side of the campus and was previously the 1930s-era hospital. “Once operational, the OC will provide a broad range of ambulatory

sub-acute care in a centralised, fit for purpose, contemporary setting,” Bradley said.



While most of the works are taking place behind the blue screens away from view, we're excited to see the project taking shape and look forward to sharing more over the coming months.

Here's a snapshot of works completed on the OC so far this year.



Progression of works for the accessible entries.



Location	Complete	In progress/ Ongoing
External	<ul style="list-style-type: none"> Installation of new roof Excavation and formwork for new accessible entry ramps Concrete pours to the entry ramp. 	<ul style="list-style-type: none"> Road paving work, in front of the entry ramp Maintenance of tree protection zones.
Ground floor	<ul style="list-style-type: none"> Internal demolition and strip-out of services Installation of new flooring New roof installed for Equipment Loan Pool space (Ascot Rd side to the rear of the OC). 	<ul style="list-style-type: none"> Structural steel installation Services reticulation including electrical, hydraulic, and mechanical. New partition walls and ceilings.
Level 1	<ul style="list-style-type: none"> Internal demolition and strip-out of services New flooring installed. 	<ul style="list-style-type: none"> Structural steel installation Services reticulation including electrical, hydraulic, and mechanical. New partition walls and ceilings.

Mind the gap!

We'd like to encourage visitors to be mindful over the next few months of a temporary reduction in the width of a section of the P2 roadway as crucial paving works are underway.

Following completion of the upper section of the new OC entry ramp, works are now commencing to connect the base section with the P2 carpark roadway.

Project working groups

In addition to the small team of people working exclusively on the Stage 2 Redevelopment, there are many others who are contributing their thoughts and expertise behind the scenes, including community members.

Project working groups allow for collaboration with subject matter experts (SME's) from a range of disciplines across the hospital and the Local Health District. The working groups also include

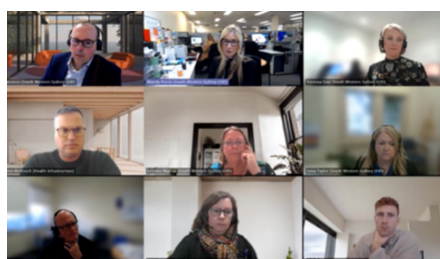
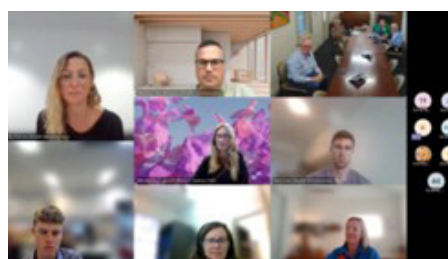
people who will be working in, and accessing, the new facilities.

"Project working groups tap into the knowledge of the SMEs who contribute their experience and expertise to the refinement and finalisation of plans for the remainder of the Stage 2 works," Hospital Redevelopment Manager Vanessa Ezzy said.

Stage 2 of the Bowral & District Hospital redevelopment is being delivered in two phases. Phase 1 will deliver the new Outpatient Centre while phase 2 will deliver the new General Services Building.



The temporary fencing has been moved out to allow for the connecting works to be completed



Technology allows for both online and in-person engagement in project working groups.



Furniture, fittings & equipment

The selection of 'task-appropriate' furniture, fittings, and equipment (FF&E) is an important element in any fit out, and especially so in a hospital setting.

The FF&E is being carefully selected in consultation with key stakeholders to ensure that the redevelopment delivers an optimal environment for our staff to work in and to provide health care services.

For the OC, there has been a conscious decision to create a space that will look and feel quite different to the acute care environment of the hospital's main clinical services building.

"Given the building's origins in the Art Deco era, efforts are being made to pay homage to the history of the building through the retention of elements such

as original timber work and transom windows," Health Infrastructure Project Director Matthew Von Bertouch said.

"This is balanced with the need to ensure that all furniture, fixtures, and equipment selections are made taking contemporary infection control measures into consideration and using clinically appropriate materials that will be safe for both staff and patients."

Stay tuned for when we're able to share images of near completed spaces later in the year.

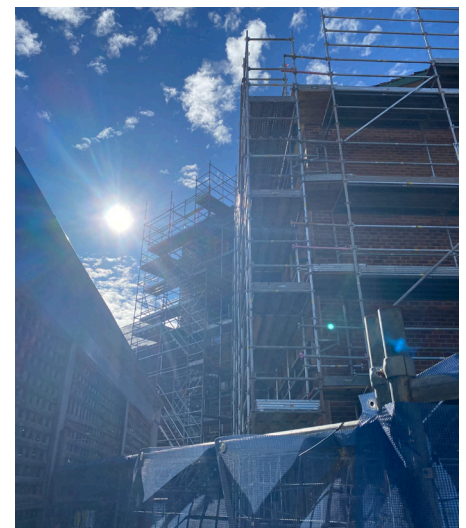


Mood boards capturing sample surfaces for consideration.

From our social pages

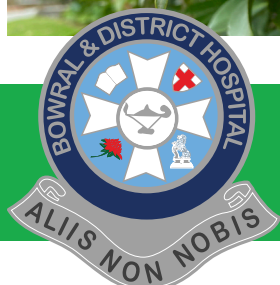
There is no doubt winter has arrived! The trees have lost their leaves, but the warm winter sun is shining on the newly erected scaffolding on the former Milton Park building which is being prepared now for its partial demolition.

If you get the chance, take some time out to appreciate the beauty and colour of our natural surroundings.



Acknowledgement of Country

Bowral & District Hospital acknowledges the Traditional Custodians on whose lands the redevelopment project stands and pays respect to the peoples of the Dharawal and Gundungurra Nations, the Traditional Owners of this land.



For more information:

 www.swslhd.health.nsw.gov.au/bowral/redevelopment

 4861 0281 or 4861 0200

 SWSLHD-BowralHospitalRedevelopment@health.nsw.gov.au

