

AUGUST 2024

Bowral & District Hospital Redevelopment Newsletter

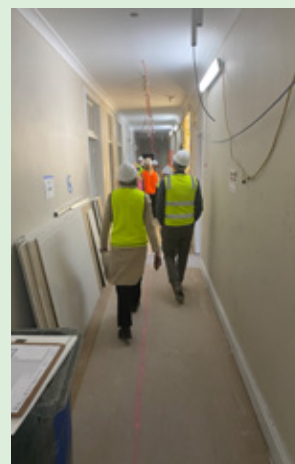
Touring the work zones

Bowral & District Hospital's General Manager Bradley Warner and members of the Executive Leadership Team and General Manager's Unit recently toured the works in progress within the new Outpatient Centre and General Services Building.

"After many months of looking at plans and examining drawings it was great for the teams to be able to walk the floors and see their new workspaces emerging. With a significant refurbishment underway, these buildings are being transformed into contemporary, climate-controlled hubs that will be fit for purpose now, and into the future," said Redevelopment Manager Vanessa Ezzy.

Spaces in the former administration building that once accommodated the executive support staff will become a centralised hub for Allied Health practitioners, a great improvement on their current space in the old Watson Building.

We look forward to taking the Allied Health heads of department through the space in the coming weeks.



X marks the spot!

The refurbishment of the former Milton Park building is forging ahead with works ramping up on the partial demolition of the southeastern end of the building.

The pink X on the wall in the photo (below left) shows where the building will end, with everything east of this mark to be brought down. The roof is currently being removed by hand and in the coming weeks a demolition robot will be brought in to effectively munch the remainder of the building down to ground level.

Every effort is being made during this deconstruction period to minimise any impacts for our neighbours on the campus and in the community. You can read more in our latest project update bit.ly/BOWAugUpdate



Inside the new linkway

When we think of the people who work in a hospital, it's often the nurses, doctors and other clinical roles that come to mind. But behind the scenes there is a vast array of back-of-house teams working constantly to keep the hospital going.

When the usual route taken by the behind-the-scenes teams needed to change as works progressed on the partial demolition of the former Milton Park building, we needed to provide an alternate route that was

safe, direct, and easily navigable.

The Hotel Services, Kitchen and Supply teams are constant users of these busy corridors connecting the main hospital building with

Milton Park, Renal and the rear of the campus so it was crucial that the temporary linkway could accommodate their diverse needs.



Working with the Hotel Services and Redevelopment teams to ensure their trolleys and tugs can be safely used in the new linkway.

Work Health & Safety and the Redevelopment



With a keen interest in ensuring workplace health and safety (WHS) issues are considered in key decision making, Bowral & District Hospital's WHS Consultant Tara Hopton provides crucial subject matter expertise to the Stage 2 Redevelopment.

We spoke with Tara recently and asked her about her involvement so far.

What do you see your role to be in the Stage 2 Redevelopment?

My focus is on working towards best practice in everything we do.

I see my role as being a conduit between staff, the facility and the redevelopment team, providing a voice for frontline staff to bring their ideas to the decision makers.

WHS has an important role to play in supporting the change process and supporting people through the practical changes in where and how they will work in the new spaces. I'm here to get people thinking about working in a new space – what will be different, and what stays the same.

Are there challenges?

One of the key challenges is balancing expectations with what is actually possible. I'm committed to supporting staff to feel that they are seen and

heard and will always support ideas for improvement that address an issue that is reasonable and necessary.

A great example of this is the recent work to ensure the new temporary linkway for back-of-house services provides a safe thoroughfare for all users. We worked collaboratively with frontline staff and the Redevelopment team to ensure that the new linkway could accommodate the variety of equipment these teams use as they utilise this shared space to move to and from the Clinical Services Building, and around the campus.

Are you active in any of the Project Working Groups?

I'm a member of several project working groups including Stores, Hotel Services and Mortuary, Clinical Information Department and the Furniture, Fixtures and Equipment (FF&E) working group where I am particularly focussed on the ergonomic and accessibility considerations for the fit out of the new areas.

I've supported groups to work through the practicality of unpacking the design plans and understanding what they mean in day-to-day terms. Will the new space be fit for purpose taking into consideration the people and equipment that will be used in and around a space? What changes will they need to make in the ways they work? And what will stay the same?

What do you hope to see come out of the redevelopment?

The new Outpatient Centre will allow us to be more connected. Co-location of allied health services and clinics will

mean less on-site travel for patients, clients, and visitors. I'm looking forward to the benefits for the way we all work and move around the campus.

I'm also keen to see the greenspace opening up and providing break out areas for staff. Access to areas to 'take a break' from what can be a challenging environment is important for the health and well-being of patients and staff alike.

Personally, I'm really looking forward to seeing all the planning come together to deliver a contemporary workspace.



Anything else you'd like to add?

I think particularly during this time of increased activity around the campus that it's important for everyone to always be aware of the environment they're in, to understand that things can change quickly, and to appreciate that WHS starts with you!

Acknowledgement of Country

Bowral & District Hospital stands proudly on Gundungurra land. We acknowledge and pay respect to the peoples of the Dharawal and Gundungurra Nations, the traditional custodians of this land. Bowral & District Hospital staff and community continue to be "Taking Care of Country".



For more information:

www.swslhd.health.nsw.gov.au/Bowral/redevelopment.html

4861 0281 or 4861 0200

SWSLHD-BowralHospitalRedevelopment@health.nsw.gov.au

