

WE'RE OPERATIONAL!

THE NEW \$68.7M clinical services building at Bowral & District Hospital is now operational, after welcoming its first patients last December.

Boasting contemporary amenities and a sleek, modern design, the new building has been purpose-built to provide the community with the highest level of quality health care.

The new building also provides for additional capacity and includes an enhanced Emergency Department (ED). Dedicated bed bays within the ED and other areas of the building have been fitted with satellite technology to facilitate communications for patient consultation and treatment across different hospitals.

There are two new operating theatres, an expanded day surgery and recovery ward, adult and paediatric inpatient wards, bariatric rooms, new rehabilitation spaces and four negative pressure rooms to support infection control.

There are also amenities for families with relatives in palliative care, modern birthing facilities for expectant mums, and a building design that ensures rooms have plenty of natural light and views of the beautiful Highlands landscape.

Improved access and wayfinding are key design features, with both physical and aesthetic connections to the existing hospital and a complementary colour scheme that celebrates the Southern Highlands.

Planning is now underway on the second stage of redevelopment works, and we're looking forward to sharing details in coming months.

CHECK IT OUT!

View the launch video on the hospital's Facebook page or on YouTube at <https://youtu.be/6GzjZTdQyD8>

NEWSLETTER | FEBRUARY 2021



The hospital site was significantly transformed during 2020, and now boasts an impressive new clinical services building to help meet the health care needs of the growing community



For more information:

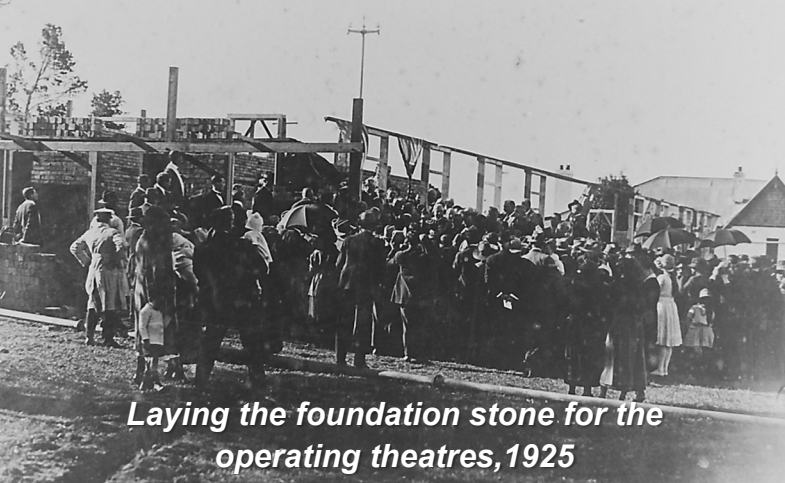
Visit www.swslhd.health.nsw.gov.au/bowral/redevelopment.html

Contact our team on 4861 0200 or 4861 0281

Email SWSLHD-BowralHospitalRedevelopment@health.nsw.gov.au

THE GRAND OPENING - 95 years on!

NEWSLETTER | FEBRUARY 2021



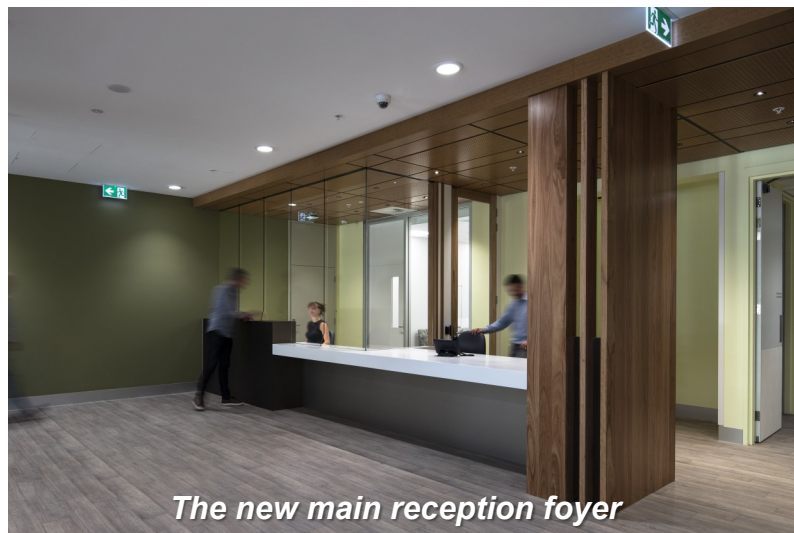
Laying the foundation stone for the operating theatres, 1925



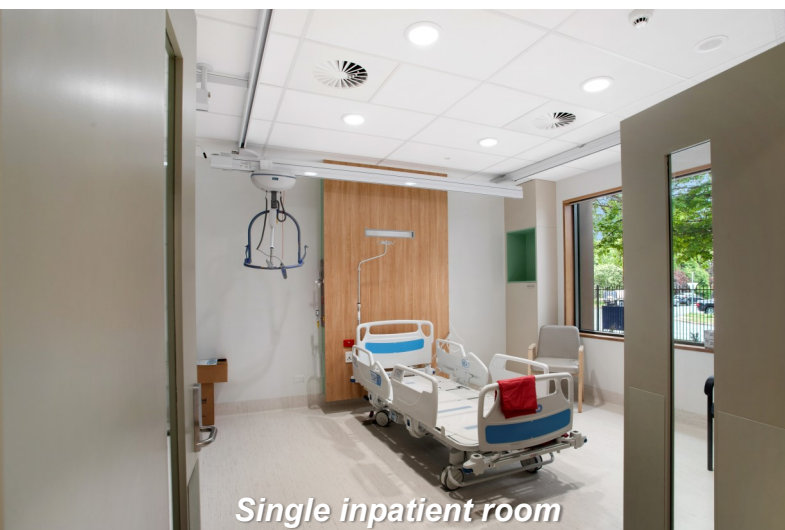
Opening of the hospital expansion, 1935



The new Clinical Services Building, 2020



The new main reception foyer



Single inpatient room



Emergency Department satellite bed bay

For more information:

Visit www.swslhd.health.nsw.gov.au/bowral/redevelopment.html

Contact our team on 4861 0200 or 4861 0281

Email SWSLHD-BowralHospitalRedevelopment@health.nsw.gov.au