



Construction Update

Construction works are well underway with the arrival onsite of steel reinforcing, concrete trucks, excavators and other machinery.

Concrete “piles” are being constructed using cylindrical cages of reinforcing steel placed into holes drilled in the ground and then filled with concrete. These pile foundations will act as a steady support for the structure to be built on top.

Once excavation and piling works are complete a concrete slab will be laid. It won't be long now until we see our new hospital begin to emerge from the ground!



Thank you for your patience while we build our new hospital

Connecting Communities

Our hospital redevelopment logo is derived from a painting by local artist Wendy Lotter.

Wendy explains: "The painting is about the connections that Bowral and Campbelltown Hospitals share in working together for better health for all people.

The painting depicts families living between both hospital areas and their connections to our land.

Aboriginal Bush medicines that are used by Aboriginal & Torres Strait Islanders are depicted by the 'Bush Currant' that are grown in the Highlands - these are used for colds, flu and general health.

The 'Tea Tree' also has various health remedies. Pulling off some leaves and smelling them will give you a nice smell and can be used for colds, sore throats, anxiety and depression. It never loses its medicinal purposes and is available all year.

Waterholes maintain life and travel between both hospitals. Around the waterholes we have many different communities traveling back and forth between Bowral and Campbelltown.

Emu tracks travel all over Bowral and Campbelltown. Women emus lay the eggs and then leave - they return once the young emus are older. The male emu must hatch the eggs and then teach them about their lives and what to expect. This reminds us that men also have responsibility to bring up their child when the mother leaves.

The artwork is about our connections to both areas and how we need help and the continuous care that both hospitals give daily.

Break down of the Aboriginal Symbols:

- The background is ochre (yellow) which comes from the earth that we live and walk on.
- The border around the ochre is depicted by emu tracks.
- The corners are depicted by four emu eggs with young emus tracks coming from the eggs.
- The coloured dots are families who travel through the Southern Highlands to Campbelltown.
- The blue water travels between Bowral and Campbelltown, the water gives us life and maintains our health."



Wendy Lotter © 2017

Did you know?

Did you know we have a Redevelopment Project Officer based here at Bowral & District Hospital?

Our own Stephen Clark works Tuesday to Friday as the 'man on the ground', helping to deliver the best possible outcome for our redevelopment and to keep the community and staff informed.

Stephen brings more than ten years of experience working here at Bowral & District Hospital to the role, including as one of the After Hours Nurse Managers and time as Acting Director Nursing & Midwifery and Operational Nurse Manager. These roles have given Stephen great insights into the running of our Hospital that complements his new role.

Stephen welcomes all questions about the hospital redevelopment – so drop him a line or pop in to see him.

Stephen himself is also excited about the new hospital and what it will bring: "What I most look forward to is delivering exactly what our staff and community signed off on and finally moving our care, consideration and exceptional healthcare to a purpose built clinical services building that will never hold us back."

You can speak to Stephen at our next redevelopment pop-up in the hospital foyer on Tuesday 2 July between 12:00 - 1:00 PM

Flashback

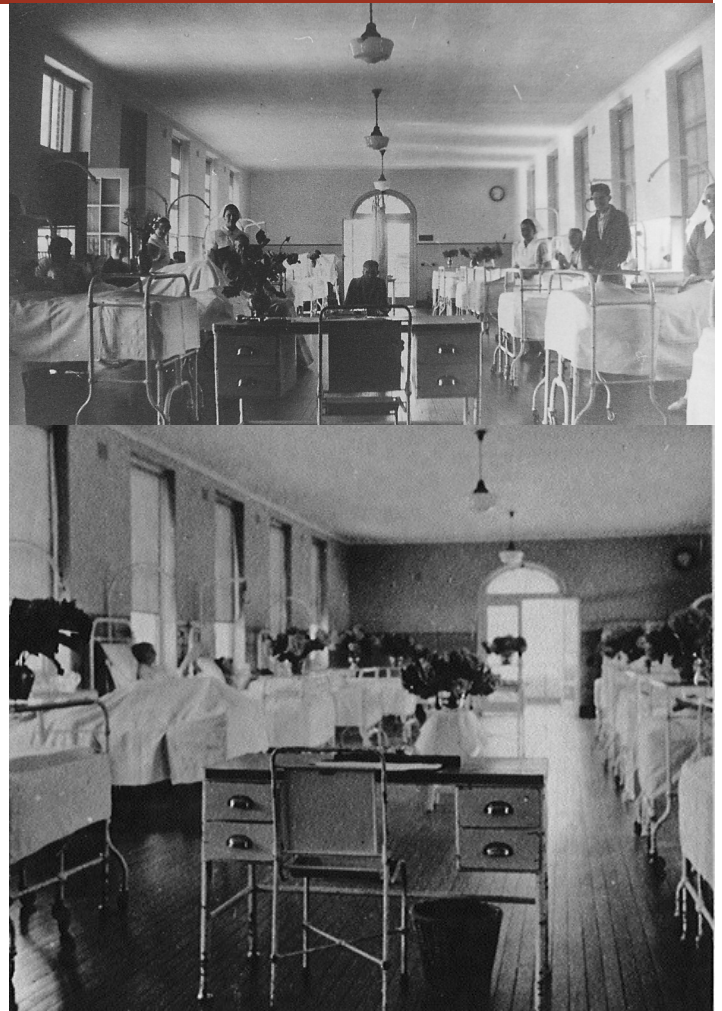
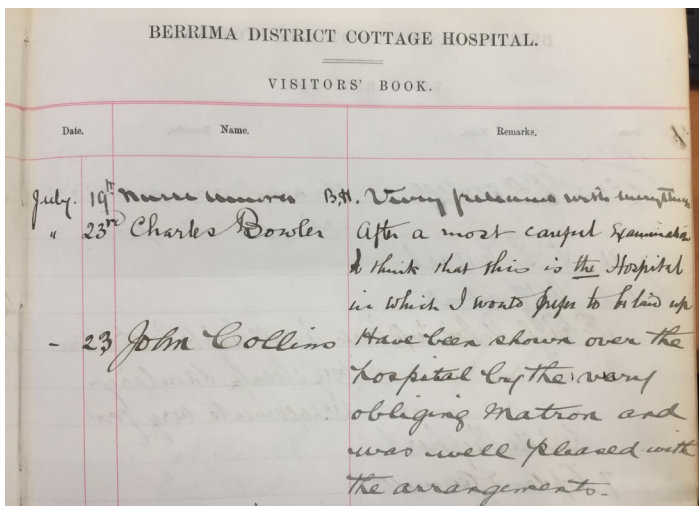
The original Berrima District Cottage Hospital Visitors Book is kept in our hospital library and available for you to flick through and read some of the very eloquently written remarks left by patients and visitors to the hospital from our very first entry by John W. Debenham on 28 Sept 1889.

Much of the feedback received in the early days was in praise of the cleanliness and homeliness of the cottage hospital, with many patients being "well pleased with the arrangements".

On 23 July 1892 Charles Bowler remarked "After a most careful examination I think that this is the Hospital in which I would prefer to be laid up" and on 12 June 1896 Carlisle Taylor wrote "If Cleanliness is next to Godliness this Hospital must be near Heaven."

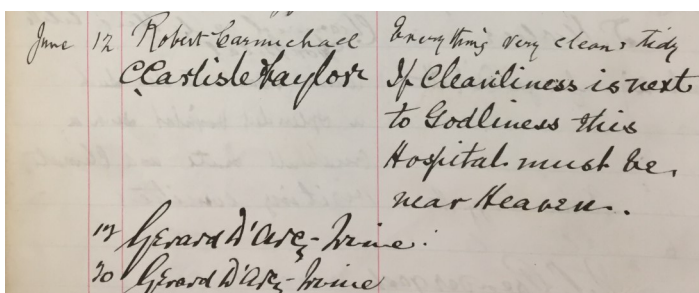
As we build our new hospital and look towards the future it is timely to take a step back in time and see how far we have come over the years.

1892



Our men's and women's wards in 1935
(Macarthur Clinical Library Archives)

1896



Artist's impression of our new patient rooms