



Artist's impression of the new Bowral & District Hospital

MSJ



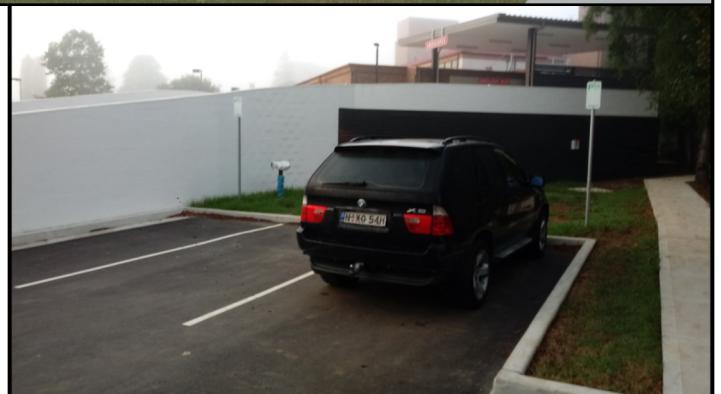
## Construction Update

Work on our hospital redevelopment has reached another important milestone.

With the completion of early works including a new driveway, ambulance access ramp to the Emergency Department, carpark works and site preparation, construction on the new Clinical Services Building will start soon.

This marks an important and exciting stage in our hospital's transformation and the delivery of improved medical services to the Southern Highlands community.

As these works start you will notice a range of construction effects across the site — exciting times ahead.



## Emergency Drop-off Zone

There are dedicated 20-minute drop-off spaces near the bottom of the new ambulance ramp for you to quickly and easily check someone into the Emergency Department before re-parking your car.

Please be considerate of others and park only in marked bays as signposted.

**Thank you for your patience  
while we build your new hospital**





## Did You Know?

In building our new hospital approximately 420 tonnes of steel reinforcing will be used – that's the same weight as 70 elephants!

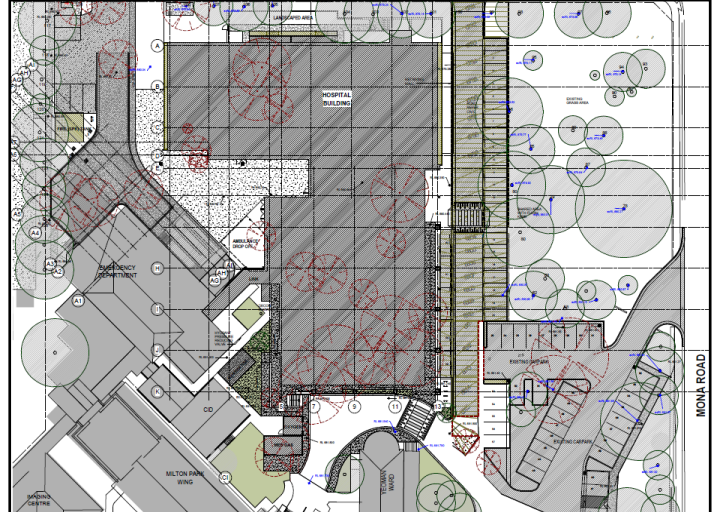


Other fun facts about the new hospital building:

The total concrete volume will be equal to 1.6 Olympic-sized swimming pools and the length of mechanical and medical gas pipework would reach almost twice the height of Australia's highest mountain, Mt Kosciuszko.



*Aerial photo of the hospital in February 2019.*



## Want to Know More?

How much do you know about our hospital redevelopment?

**Drop in on Tuesday 9 April  
between 11am and 2pm  
to find out more**

You will find our pop-up display and friendly project staff just inside the entrance to Milton Park

To find out more about the Bowral & District Hospital redevelopment:

- ⇒ Check [swslhd.health.nsw.gov.au](http://swslhd.health.nsw.gov.au)
- ⇒ Visit our monthly pop-up display
- ⇒ Follow us on Facebook
- ⇒ See the project information board in the hospital
- ⇒ Email us