

GRANT APPLICATION PROCESS

Who is the Administering Organisation?

SWSLHD

Ingham Institute / Universities
/ Other LHD / Other

Can SWSLHD be the Administering Organisation? (check eligibility)

Is SWSLHD the host?

Yes

No

Yes

No

→ Click here

Click here to email the Research Directorate
↑

Contact Research Directorate.
Register interest 4 weeks prior or as soon as possible

Contact Research Directorate
(at least 2 weeks prior)

→ Click here to email the Research Directorate

Click here for definitions of:
• Administering Organisation
• Host Organisation

Is a signature required on the application?

No

Yes

Click here to email the Research Directorate
↑

Contact Details:

Research Directorate
Tel: 8738 8317
Email: SWSLHD-ResearchDirectorate@health.nsw.gov.au

Is a letter of support required?

Yes

No

Contact Research Directorate
(at least 2 weeks prior)
A brief will be required

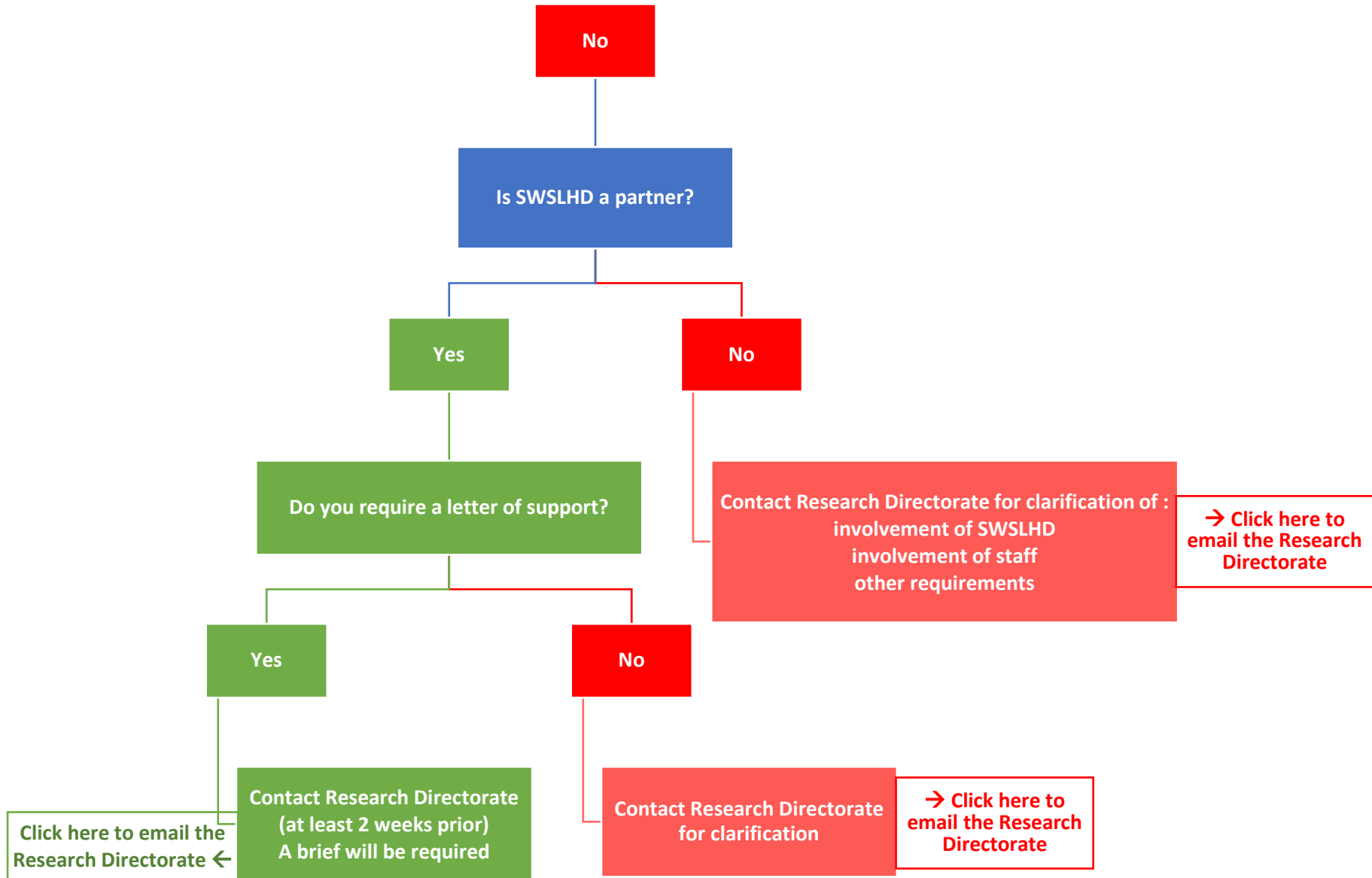
Click here to email the Research Directorate ←

Contact Research Directorate
(at least 2 weeks prior)
A brief will be required

Contact Research Directorate for clarification

→ Click here to email the Research Directorate

Is SWSLHD the host?



What is an administering organisation?

In the context of a grant administered by NSW Health, an administering organisation is required where the funds are held by a separate organisation to the host organisation. In such cases, the administering organisation will enter into the funding agreement with NSW Health, manage the funds, submit financial reports and coordinate other reporting requirements as outlined in the funding agreement. It is usually required that an administering institution is required when grant funds must be paid to an administering organisation that can manage funds across financial years, as the full grant amount will be paid upfront. In this example, an administering organisation must be a university, medical research institute, or non-government organisation in NSW.

An administering organisation/institution is otherwise defined by the grant funding conditions or guidelines.

What is a host organisation?

The host organisation is where most of the research is conducted, or as otherwise defined by the grant funding conditions or guidelines.