



Health  
South Western Sydney  
Local Health District

# Funding and Training Opportunities

*Research Grants, Scholarships, Awards, Conferences and Training Sessions*

Prepared by the Development Support Unit,  
[SWSLHD Research Directorate](#)

## **IMPORTANT INFORMATION**

Please note, any applications requiring a letter of support and/or Chief Executive sign-off must go through the appropriate approval process and will require a minimum lead time of 2 weeks.

Please discuss any potential letters of support or applications requiring signature with Rachel Goldrick on 02 8738 8315 or at [SWSLHD-ResearchDirectorate@health.nsw.gov.au](mailto:SWSLHD-ResearchDirectorate@health.nsw.gov.au)

Up-to-date information on approvals is available on the Research Directorate website under "Grants" → <https://www.swslhd.health.nsw.gov.au/ethics/grants.html>

Please see the Research Directorate website for information relating to the Grant Application Process:  
<https://www.swslhd.health.nsw.gov.au/Ethics/content/pdf/Grant%20Application%20Decision%20Tool.pdf>

Closing Date	Name	Details	Website	Restrictions	Last Updated
Mar-24					
04-Mar-24	Breast Imaging Advanced Trainee Grant Program 2025 Round	The Breast Imaging Advanced Trainee Grant Program supports advanced trainees in diagnostic radiology to undertake clinical practice improvement through further training and research related to breast imaging.	<a href="https://www.cancer.nsw.gov.au/research-and-data/grants/grant-opportunities/breast-imaging-advanced-trainee-grant-program-2025">https://www.cancer.nsw.gov.au/research-and-data/grants/grant-opportunities/breast-imaging-advanced-trainee-grant-program-2025</a>		05-Feb-24
06-Mar-24	MRFF Indigenous Health Research Fund – 2023 Indigenous Health Research Grant Opportunity	The Medical Research Future Fund (MRFF) Indigenous Health Research Fund aims to improve the health of Aboriginal and Torres Strait Islander people over 11 years from 2018–19 to 2028–29. The objectives and outcomes of the 2023 Indigenous Health Research grant opportunity are detailed in the grant guidelines.	<a href="https://www.grants.gov.au/Go/Show?GoUId=c4fa41f1-eef6-4d12-9858-2c8bec6e1878">https://www.grants.gov.au/Go/Show?GoUId=c4fa41f1-eef6-4d12-9858-2c8bec6e1878</a>	NHMRC Administering Institution Only	10-Jul-23
08-Mar-24	Cystic Fibrosis Western Australia, Post Graduate Top Up Scholarship	CFWA's Post Graduate Top Up Scholarship is designed to encourage and support students who are conducting CF related research for a higher degree (PhD, Masters or equivalent). We currently have a scholarship available to an eligible student working in the CF field.	<a href="https://www.cysticfibrosis.org.au/current-grant-opportunities/">https://www.cysticfibrosis.org.au/current-grant-opportunities/</a>		19-Feb-24
13-Mar-24	The Strategic Program for Advancing Research Commercialisation (SPARC) 2024 RFA	The SPARC 2024 RFA is inviting proposals from investigators affiliated with Australian institutions and for-profit entities with the aim of funding projects in high-impact areas of T1D research. The Awards will provide funding for up to \$150,000 in total for a period of up to 12 months. It is expected that a maximum of five (5) Grants will be awarded.	<a href="https://jdrf.org.au/for-researchers/rfa-for-research-to-improve-t1d-treatment-and-care/">https://jdrf.org.au/for-researchers/rfa-for-research-to-improve-t1d-treatment-and-care/</a>		04-Mar-24
15-Mar-24	Mito Foundation Targeted Research Call	Mito Foundation's Targeted Research Call is a new funding opportunity that aims to support projects that will make a significant and sustainable contribution to improving health services for Australians living with mito. In 2024, this grant has a health services research focus. Funded projects should aim to improve health care, including the delivery, quality, efficiency, and equity of access to health services.	<a href="https://www.mito.org.au/targeted-research-call/">https://www.mito.org.au/targeted-research-call/</a>		19-Feb-24
15-Mar-24	Trish Multiple Sclerosis Research Foundation Translational Research Project Grants	The Trish Multiple Sclerosis Research Foundation is calling for Expressions of Interest for Translational Research commencing 2025. The Foundation's honorary Scientific Research Committee will consider Expressions of Interest for two Translational Research Projects totalling \$150,000 each, over a two year period. These Translational Research Project Grants are particularly suited to early career researchers. The Translational Research Project Grants will be awarded to Australian researchers undertaking high-quality translational MS research which demonstrates clear evidence of translational research capacity and is aimed to address the unmet needs of people living with Progressive MS.			19-Feb-24
18-Mar-24	SPHERE PhD Scholarship Top-Up Awards	The SPHERE Cancer CAG PhD Scholarship Top-Up Awards are designed to enhance the translational cancer research capabilities of PhD candidates whose research interest aligns to the key areas of focus of the Cancer CAG. Top-Up awards of up to \$10,000 per annum are available for up to 2 years. Candidates must be enrolled in a SPHERE affiliated University (Western, UNSW Sydney or UTS).	See attachments		05-Feb-24
25-Mar-24	NFMRI General Grant Round	Applications for innovations across all diseases and conditions are sought from Australian publicly funded research organisations. Focus: Open nationally across all diseases and conditions affecting humans. (Portfolios 2 & 3 only)	<a href="https://nfmri.org.au/research-and-innovation/apply-for-support/">https://nfmri.org.au/research-and-innovation/apply-for-support/</a>		22-Jan-24
25-Mar-24	Alzheimer's Disease Grant Round	As part of our partnership with The Mason Foundation (managed by Equity Trustees), NFMRI is seeking EOIs for Alzheimer's disease research projects.	<a href="https://nfmri.org.au/research-and-innovation/apply-for-support/">https://nfmri.org.au/research-and-innovation/apply-for-support/</a>		22-Jan-24
25-Mar-24	Childhood and youth diseases grant round	Focus: Alzheimer's disease applications that fall within portfolios 1, 2 & 3 (preference for 2 & 3), open nationally. NFMRI will soon be seeking EOIs for research projects into diseases affecting children and youth. Focus: Childhood and youth diseases applications that fall within portfolios 2 & 3 only, open nationally.	<a href="https://nfmri.org.au/research-and-innovation/apply-for-support/">https://nfmri.org.au/research-and-innovation/apply-for-support/</a>		22-Jan-24
27-Mar-24	2023 Childhood Mental Health Research Grant Opportunity	This grant opportunity is the first under the \$50.0 million Childhood Mental Health Research Plan, developed by an independent Expert Advisory Panel mid-2023.	<a href="https://www.grants.gov.au/Go/Show?GoUId=7a373ad2-b470-464d-b6c4-196f1dea392f">https://www.grants.gov.au/Go/Show?GoUId=7a373ad2-b470-464d-b6c4-196f1dea392f</a>	NHMRC Administering Institution Only	16-Oct-23
29-Mar-24	Medical Devices Fund - Round 12	Applications are now open for Round 12 of the Medical Devices Fund. In this round up to \$8 million in funding is available and eligible applicants can apply for a minimum of \$500,000 and a maximum of \$5,000,000 (excluding GST) per application. Preliminary applications close on 29 March 2024 at 10:00am AEDT.	<a href="https://www.medicalresearch.nsw.gov.au/medical-devices-fund/">https://www.medicalresearch.nsw.gov.au/medical-devices-fund/</a>		04-Mar-24
31-Mar-24	2022 Frontier Health and Medical Research Grant Opportunity	This grant opportunity offers funding to support medical research and medical innovation programs of research that deliver a 'moonshot' by creating a treatment for a currently serious and incurable health condition, through a series of linked projects. The program of research can propose to develop novel health technologies and/or re-purpose existing health technologies in a novel way. The process to get funding has 2 stages: expression of interest – outlining a proposed program of research with a 10-year time horizon full application, for a project of up to 5 years under the program of research.	<a href="https://business.gov.au/grants-and-programs/mrff-2022-frontier-health-and-medical-research">https://business.gov.au/grants-and-programs/mrff-2022-frontier-health-and-medical-research</a>	Full applications by invitation only. See grant guidelines (universities or MRIs eligible to apply)	10-Jul-23
Apr-24					

08-Apr-24	Nurse Unit Manager Leadership Program	Are you ready to step up and shape the future of healthcare? Our Nurse Unit Manager Leadership Program is your key to unlocking a fulfilling leadership career in 2024. This program is more than just training; it's a transformative experience that will leave you feeling empowered, confident, and ready to make a meaningful impact in your unit.	<a href="https://www.acn.edu.au/leadership/nurse-unit-manager-leadership-program?utm_source=free_enews&amp;utm_medium=email&amp;utm_campaign=nursing_unit_manager_leadership_program_2024&amp;zs=3q45o&amp;zl=cxpx2">https://www.acn.edu.au/leadership/nurse-unit-manager-leadership-program?utm_source=free_enews&amp;utm_medium=email&amp;utm_campaign=nursing_unit_manager_leadership_program_2024&amp;zs=3q45o&amp;zl=cxpx2</a>		19-Feb-24
10-Apr-24	Multidisciplinary models of Primary Care (Streams 1, 2 and 3)	This grant opportunity is intended to support projects that progress research that addresses a specific health need. This grant opportunity is being administered by NHMRC on behalf of the Australian Government Department of Health and Aged Care. Total amount available is \$25,200,000 with estimated grants up to the amount of \$5,200,000.	<a href="https://www.grants.gov.au/Go/Show?GoUId=1a806c57-5ade-4228-b4e9-37008cd5ab94">https://www.grants.gov.au/Go/Show?GoUId=1a806c57-5ade-4228-b4e9-37008cd5ab94</a>	NHMRC Administering Institution Only	11-Dec-23
22-Apr-24	2024 Young Tall Poppy Awards	The annual Young Tall Poppy Awards recognise and celebrate the achievements of Australian scientists. Become a 2024 Young Tall Poppy to be recognised for your intellectual and scientific excellence and further engage in activities to promote interest in science amongst the broader community. Nominations open 22nd February 2024.	<a href="https://ajps.net.au/2024-young-tall-poppy-awards-2/">https://ajps.net.au/2024-young-tall-poppy-awards-2/</a>		05-Feb-24
26-Apr-24	SPHERE Seed Funding Grant Scheme 2024 – Partnership Grant	Total funding of \$500,000 is available in this round of SPHERE's Seed Funding Grant Scheme to support up to 2-5 grants of \$100,000-\$200,000 according to merit. Funding is contingent on obtaining partnership success within eight months of the SPHERE award. The total funding will not exceed the cash co-contribution provided by the industry partner. Awards that are unsuccessful in achieving the partnership grant will return to the following year funding pool. All applicants will have the opportunity to reapply, potentially building on feedback or further collaboration that has strengthened the original submission for partnership success.	See attachment	See eligibility criteria	22-Jan-24
29-Apr-24	Sustainable Futures Innovation Fund	The Sustainable Futures Innovation Fund provides up to \$25,000 to support staff-led innovation projects that improve patient care and reduce our environmental footprint.	<a href="https://www.health.nsw.gov.au/netzero/Pages/innovation-fund.aspx">https://www.health.nsw.gov.au/netzero/Pages/innovation-fund.aspx</a>		04-Mar-24
30-Apr-24	2023 Post-Acute Sequelae of COVID-19 (Stream 4 Stage 2)	Establish a multidisciplinary national adaptive platform trial that accelerates assessment and implementation of therapeutic interventions (pharmacological and non-pharmacological) for PASC.	<a href="https://www.grants.gov.au/Go/Show?GoUId=9d495c0c-a3f9-4c05-9656-c4a4e7289d2f">https://www.grants.gov.au/Go/Show?GoUId=9d495c0c-a3f9-4c05-9656-c4a4e7289d2f</a>	NHMRC Administering Institution Only	04-Oct-23
May-24					
10-May-24	Heart Foundation - Postdoctoral Fellowship	This Fellowship is aimed at early career researchers and seeks to identify the strongest emerging Australian talent who have just completed or nearing completion of their postdoctoral studies (PhD). The successful Postdoctoral Fellow will have a demonstrated strong track record during their PhD and be working towards gaining recognition for their expertise in their research area	<a href="https://www.heartfoundation.org.au/Bundles/Our-Research/Research/Postdoctoral-Fellowship">https://www.heartfoundation.org.au/Bundles/Our-Research/Research/Postdoctoral-Fellowship</a>		05-Feb-24
24-May-24	Heart Foundation - Vanguard Grants	Applying in biomedical, clinical, public health and/or health services (including clinical service delivery) research, applicants may submit pilot studies and 'stand-alone' projects which may lead to larger, more rigorous studies in the future. These projects are expected to produce tangible outcomes with the potential to further advance preclinical research technology or improve cardiovascular health.	<a href="https://www.heartfoundation.org.au/bundles/our-research/research/vanguard-grants">https://www.heartfoundation.org.au/bundles/our-research/research/vanguard-grants</a>		05-Feb-24
29-May-24	MRFF 2023 Clinical Trials Activity Grant Opportunity	Applications to this grant opportunity must propose research that addresses one of the four Streams of research. An application may be submitted to one of the four Streams only	<a href="#">Current Grant Opportunity View - GO6540: GrantConnect (grants.gov.au)</a>	Applications will only be accepted from NHMRC approved MRFF Eligible Organisations	13-Nov-23
31-May-24	The Ramaciotti Awards	The Ramaciotti Foundations have three award categories, each with its own guidelines detailed on the following pages: <ul style="list-style-type: none"> <li>• Ramaciotti Medal for Excellence in Biomedical Research</li> <li>• Ramaciotti Health Investment Grants</li> <li>• Ramaciotti Biomedical Research Award (biennial)</li> </ul>	<a href="https://www.perpetual.com.au/globalassets/au-site-media/01-documents/03-wealth-management/03-campaign/2024/2024-rama-foundations-guidelines.pdf">https://www.perpetual.com.au/globalassets/au-site-media/01-documents/03-wealth-management/03-campaign/2024/2024-rama-foundations-guidelines.pdf</a>	Applications will only be accepted from NHMRC Eligible Organisations	04-Mar-24
31-May-24	National Breast Cancer Foundation Research Project Grant (RPG) Round 2024	The Research Project Grant scheme's main purpose is to fund investigator-initiated research projects to build Australia's breast cancer research pipeline and addresses research questions with a clear line of sight to Zero Deaths from breast cancer. Research supported under the Research Project Grant scheme should demonstrate the potential to help achieve our vision of Zero Deaths from breast cancer and should relate to one or more of the four Pink Horizon Strategic core objectives: <ol style="list-style-type: none"> <li>1. Prevent breast cancer through precision prevention.</li> <li>2. Detect breast cancer as early as possible and before it progresses.</li> <li>3. Stop the progression and recurrence of breast cancer.</li> <li>4. Treat hard to treat and metastatic breast cancers.</li> </ol>	<a href="https://grants.nbcf.org.au/">https://grants.nbcf.org.au/</a>		05-Feb-24

Jun-24

07-Jun-24	Heart Foundation - Future Leader Fellowship	The fellowship supports aspiring leaders who are developing independence and developing their own research portfolio, through to established leaders of cardiovascular research groups with extensive research portfolios.	<a href="https://www.heartfoundation.org.au/Bundles/Our-Research/Research/Future-Leader-Fellowship">https://www.heartfoundation.org.au/Bundles/Our-Research/Research/Future-Leader-Fellowship</a>		05-Feb-24
12-Jun-24	Development Grants	The objectives of the Development Grant scheme are to expedite the translation of health and medical research outcomes through to commercialisation within a foreseeable timeframe by supporting proof-of-concept research with a feasible commercialisation pathway and a high likelihood of producing protected IP.	<a href="https://www.nhmrc.gov.au/funding/find-funding/development-grants">https://www.nhmrc.gov.au/funding/find-funding/development-grants</a>	See eligibility criteria	22-Jan-24
14-Jun-24	Heart Foundation - PhD Scholarship	The scholarship supports outstanding graduates early in their careers so they can be trained to conduct cardiovascular health and medical research that is internationally competitive.	<a href="https://www.heartfoundation.org.au/bundles/our-research/research/phd-scholarship">https://www.heartfoundation.org.au/bundles/our-research/research/phd-scholarship</a>		05-Feb-24
19-Jun-24	MRFF EPCDRI 2024 Paediatric Brain Cancer Research Grant Opportunity	The Emerging Priorities and Consumer-Driven Research Initiative (the Initiative) aims to enable or support research that improves patient care and translation of new discoveries and encourage collaboration between consumers and researchers. Funding from this Initiative will support the development of new diagnoses, treatments and cures, and the translation of new discoveries into clinical practice.	<a href="https://www.grants.gov.au/Go/Show?GoUId=9773a1b8-8222-422e-83c8-a6ca9a42976d">https://www.grants.gov.au/Go/Show?GoUId=9773a1b8-8222-422e-83c8-a6ca9a42976d</a>	Applications will only be accepted from NHMRC approved MRFF Eligible Organisations	19-Feb-24
21-Jun-24	Heart Foundation - Collaboration and Exchange Grant	Encouraging fellows and scholars to visit research facilities (AUS & OS), to develop collaborations, exchange knowledge, develop skills and encourage innovation.	<a href="https://www.heartfoundation.org.au/bundles/our-research/research/collaboration-exchange-award">https://www.heartfoundation.org.au/bundles/our-research/research/collaboration-exchange-award</a>		05-Feb-24

Jul-24

10-Jul-24	2023 Innovative Trials	The objective of the 2023 Innovative Trials grant opportunity is to provide grants of financial assistance to support Australian medical research and medical innovation projects that; address an area of unmet medical need by promoting the development and implementation of adaptive platform trials.	<a href="https://www.grants.gov.au/Fo/Show?FoUId=f54f2ea2-3a5d-48f0-84c9-8e23862f004e">https://www.grants.gov.au/Fo/Show?FoUId=f54f2ea2-3a5d-48f0-84c9-8e23862f004e</a>	Applications will only be accepted from NHMRC approved MRFF Eligible Organisations	11-Nov-23
10-Jul-24	Medical Research Future Fund – National Critical Research Infrastructure Initiative – 2023 Innovative Trials	This grant opportunity is part of the MRFF’s National Critical Research Infrastructure Initiative. NCRI provides funding through multiple streams to establish and extend infrastructure (facilities, equipment, systems and services) of critical importance that will be used to conduct world-class health and medical research.		Applications will only be accepted from NHMRC approved MRFF Eligible Organisations	19-Feb-24
10-Jul-24	MRFF - EPCDRI & PHCRI - 2023 Multidisciplinary Models of Primary Care Grant Opportunity (Stream 4)	The Medical Research Future Fund (MRFF) – 2023 Multidisciplinary Models of Primary Care Grant Opportunity will support research that: Stream 4 (Aim 2 of Research Plan; Targeted Call for Research): develop and implement multidisciplinary, collaborative, regional consortia that design, implement and evaluate (including cost-benefit analyses) system level reform strategies for local health system integration.	<a href="https://www.grants.gov.au/Go/Show?GoUId=f0dcd84b-6a15-4800-98fc-8d3654fa0a7f">https://www.grants.gov.au/Go/Show?GoUId=f0dcd84b-6a15-4800-98fc-8d3654fa0a7f</a>	Applications will only be accepted from NHMRC approved MRFF Eligible Organisations	19-Feb-24
12-Jul-24	Heart Foundation - First Nations CVD Grant	This funding opportunity is expected to produce tangible outcomes with the potential to create high-impact change to the cardiovascular health of First Nations Peoples.	<a href="https://www.heartfoundation.org.au/bundles/our-research/research/first-nations-cvd-grant">https://www.heartfoundation.org.au/bundles/our-research/research/first-nations-cvd-grant</a>		05-Feb-24
24-Jul-24	MRFF 2024 Early to Mid-Career Researchers Grant Opportunity	The objective of this grant opportunity is to provide grants of financial assistance to support medical research and medical innovation projects that: conduct early stage, small scale research, led by early-career researchers, that seeks to assess the potential and feasibility of novel strategies to address a critical or intractable health issue in one or more Priority Populations. To find out more, click on the link.	<a href="https://www.grants.gov.au/Go/Show?GoUId=f0dcd84b-6a15-4800-98fc-8d3654fa0a7f">https://www.grants.gov.au/Go/Show?GoUId=f0dcd84b-6a15-4800-98fc-8d3654fa0a7f</a>	Applications will only be accepted from NHMRC approved MRFF Eligible Organisations	19-Feb-24

		The objective of this grant opportunity is provide grants of financial assistance to support medical research and medical innovation projects that:			
24-Jul-24	MRFF – Stem Cell Therapies Mission – 2024 Stem Cell Therapies Grant Opportunity	Stream 1 (Priority area 1.1, Incubator): conduct short-term, small-scale development projects to establish the feasibility of novel cellular therapies. Such development projects should involve novel applications of human tissue or pluripotent stem cells. Stream 2 (Priority area 2.1, Incubator): develop disease model platforms. Research projects may include: development and validation of knowledge cell-based models of disease including genetic disease, infectious disease, …	<a href="https://www.grants.gov.au/Go/Show?GoU-uid=3bb0c415-5f6c-4e02-9c1d-60768ae7a90b">https://www.grants.gov.au/Go/Show?GoU-uid=3bb0c415-5f6c-4e02-9c1d-60768ae7a90b</a>	Applications will only be accepted from NHMRC approved MRFF Eligible Organisations	04-Mar-24
24-Jul-24	MRFF – 2024 Indigenous Health Research Grant	Conduct a large-scale multidisciplinary project to develop and evaluate effective strategies to reduce the prevalence of chronic disease in Aboriginal and/or Torres Strait Islander people. Conduct a large-scale multidisciplinary project to develop and evaluate improved understanding of the relationships between infection, inflammation, and chronic diseases among Aboriginal and/or Torres Strait Islander people. Conduct early-stage developmental research to improve understanding of the association between racism, intergenerational trauma and issues of social justice and health outcomes, and how they intersect with other forms of disadvantage. The 2024 Biomedical Grant Opportunity is part of the Medical Research Future Fund and the Medical Research Commercialisation Initiative.	<a href="https://www.nhmrc.gov.au/funding/find-funding/mrff-2024-indigenous-health-research-grant-opportunity-go6752">https://www.nhmrc.gov.au/funding/find-funding/mrff-2024-indigenous-health-research-grant-opportunity-go6752</a>	Applications will only be accepted from NHMRC approved MRFF Eligible Organisations	19-Feb-24
31-Jul-24	Medical Research Future Fund 2024 BioMedTech Incubator grant opportunity	This opportunity looks to fund suitable organisations to identify, select and support Australian SMEs undertaking early-stage medical research and medical innovation projects that have commercial potential. The intended outcome of the research funded by this grant opportunity is to improve the health and wellbeing of Australians by increasing the number of SMEs developing novel biomarkers, diagnostics, therapeutics, assistive devices and/or digital technologies	<a href="https://www.grants.gov.au/Go/Show?GoU-uid=718c961f-0427-4ff5-a60e-5535e8ac0d28">https://www.grants.gov.au/Go/Show?GoU-uid=718c961f-0427-4ff5-a60e-5535e8ac0d28</a>	See eligibility criteria	04-Mar-24
31-Jul-24	MRFF – 2024 Survivorship Care and Collaborative Research Prioritisation Grant	This grant opportunity will provide grants of financial assistance to support medical research and medical innovation projects that: Stream 1 (Targeted Call for Research): develop scalable and sustainable approaches, in partnership with consumers, to improve survivorship care and quality of life for individuals who have survived severe health conditions and their families, careers, and communities. Stream 2 (Incubator): conduct pilot projects co-led with communities that scope and address priority health issues.	<a href="https://www.nhmrc.gov.au/funding/find-funding/mrff-2024-survivorship-care-and-collaborative-research-prioritisation-grant-opportunity-go6776">https://www.nhmrc.gov.au/funding/find-funding/mrff-2024-survivorship-care-and-collaborative-research-prioritisation-grant-opportunity-go6776</a>	Applications will only be accepted from NHMRC approved MRFF Eligible Organisations	19-Feb-24
31-Jul-24	MRFF – 2024 Cardiovascular Health Grant Opportunity	The Medical Research Future Fund (MRFF) – 2024 Cardiovascular Health Grant Opportunity will support medical research and medical innovation projects that: Stream 1: reduce the number of Australians experiencing cardiovascular disease and stroke by developing and implementing early, more effective preventive health interventions, by developing, optimising and implementing clinical pathways that embed evidence-based treatment, including for risk factors.	<a href="https://www.nhmrc.gov.au/funding/find-fu">https://www.nhmrc.gov.au/funding/find-fu</a>	Applications will only be accepted from NHMRC approved MRFF Eligible Organisations	19-Feb-24
Aug-24					
01-Aug-24	Stroke Foundation Seed Grants	Seed funding is a focus of our grants program, providing a platform for researchers in the early stages of their career and supporting advancement in stroke. In 2024, Stroke Foundation is undertaking a consumer-led research prioritization exercise in partnership with the stroke research community.	<a href="https://strokefoundation.org.au/what-we-do/research/research-grants/current">https://strokefoundation.org.au/what-we-do/research/research-grants/current</a>	Applications open June 2024	22-Jan-24
07-Aug-24	Multidisciplinary models of Primary Care (Stream 4)	This grant opportunity is intended to support projects that progress research that addresses a specific health need. This grant opportunity is being administered by NHMRC on behalf of the Australian Government Department of Health and Aged Care. Total amount available is \$16,800,000 with estimated grants up to the amount of \$2,800,000.	<a href="https://www.grants.gov.au/Go/Show?GoU-uid=e009059a-4596-47b5-8303-14e927ca9a0c&amp;keyword=GO6509">https://www.grants.gov.au/Go/Show?GoU-uid=e009059a-4596-47b5-8303-14e927ca9a0c&amp;keyword=GO6509</a>	Applications will only be accepted from NHMRC approved MRFF Eligible Organisations	11-Dec-23
07-Aug-24	Million Minds Mental Health Research Mission – 2024 Mental Health Research Grant Opportunity	The Million Minds Mental Health Research Mission aims to improve the quality of life of an additional one million people, who might not otherwise benefit from mental health research, to be part of new approaches to prevention, detection, diagnosis, treatment and recovery.	<a href="https://www.grants.gov.au/Go/Show?GoU-uid=1444f87e-9459-4d28-b7c9-37f97337c68a">https://www.grants.gov.au/Go/Show?GoU-uid=1444f87e-9459-4d28-b7c9-37f97337c68a</a>	Applications will only be accepted from NHMRC approved MRFF Eligible Organisations	19-Feb-24
07-Aug-24	MRFF – Preventive and Public Health Research Initiative – 2024 Maternal Health and Healthy Lifestyles Grant Opportunity	The objective of this grant opportunity is to provide grants of financial assistance to support medical research and medical innovation projects that: design, implement and/or evaluate the effectiveness of integrated and multidisciplinary delivery of maternal and child health services in the first 2000 days of life (pregnancy to age 5) for equitable health and development. For more information, click on the link.	<a href="https://www.grants.gov.au/Go/Show?GoU-uid=e481f8ff-8517-4aaf-a437-2523a2b484b2">https://www.grants.gov.au/Go/Show?GoU-uid=e481f8ff-8517-4aaf-a437-2523a2b484b2</a>	Applications will only be accepted from NHMRC approved MRFF Eligible Organisations	19-Feb-24
07-Aug-24	Dementia, Ageing and Aged Care Mission – 2024 Dementia, Ageing and Aged Care Grant Opportunity	The objective of this grant opportunity is to provide grants of financial assistance to support medical research and medical innovation projects that: conduct implementation research focused on addressing inequalities in access to high-quality care for older Australians from diverse and disadvantaged backgrounds. To find out more, click on the link.	<a href="https://www.grants.gov.au/Go/Show?GoU-uid=1458100c-480e-4f27-851e-ec338b8ea3ab">https://www.grants.gov.au/Go/Show?GoU-uid=1458100c-480e-4f27-851e-ec338b8ea3ab</a>	Applications will only be accepted from NHMRC approved MRFF Eligible Organisations	19-Feb-24
14-Aug-24	MRFF – PPHRI – 2024 Enhancing Medical Device Surveillance Through Registries Grant Opportunity	The objective of this grant opportunity is to provide grants of financial assistance to support medical research and medical innovation projects that: Stream 1 (Targeted Call for Research): establish or expand a registry to collect and promote analysis of information on medical devices and tools used to treat atrial fibrillation, including evaluation of cost-effectiveness and clinical outcomes Stream 2 (Targeted Call for Research): expand coverage of device-specific data and improve nationwide data collection and analysis on spinal procedures using implantable devices, including evaluation of cost-effectiveness and clinical outcomes.	<a href="https://www.grants.gov.au/Go/Show?GoU-uid=bdc3d371-02bf-4cdd-8857-1a98eed496ba">https://www.grants.gov.au/Go/Show?GoU-uid=bdc3d371-02bf-4cdd-8857-1a98eed496ba</a>	Applications will only be accepted from NHMRC approved MRFF Eligible Organisations	04-Mar-24
Sep-24					
Oct-24					
Nov-24					

27-Nov-24	NHMRC Partnership Project - National Health and Research Council	The objectives of the Partnership Project scheme is to meet the need for more effective integration of research evidence into health policy and service delivery and create partnerships among policy makers, managers, service providers and researchers. To also provide support to answer often complex and difficult questions that policy makers managers ad service providers face when making decisions and implementing policies that affect Australians health and health care.	<a href="https://www.grants.gov.au/Go/Show?GoUoid=8339df5e-829b-40aa-bb79-77d26e4aec95">https://www.grants.gov.au/Go/Show?GoUoid=8339df5e-829b-40aa-bb79-77d26e4aec95</a>	See eligibility criteria	22-Jan-24
30-Nov-24	McCusker Charitable Foundation Grants	The McCusker Charitable Foundation's primary focus is medical research and the advancement of science. The Directors will consider applications for assistance for care, promotion of high achievement, support for the aged, development of the arts, agricultural research and projects that encourage greater philanthropy, volunteering and giving in Australia	<a href="https://granthelper.com.au/government-grant-news/mccusker-charitable-foundation-grants/">https://granthelper.com.au/government-grant-news/mccusker-charitable-foundation-grants/</a>		04-Mar-24
Dec-24					
Beyond					
30-Apr-25	MRFF - EPCDRI - 2023 Post-Acute Sequelae of COVID-19 Grant Opportunity (Stream 4 Stage 2)	This is for Stream 4 Stage 2 applicants only. The objective of this grant opportunity is to: Stream 4: Stage 2 (Targeted Call for Research): establish a multidisciplinary national adaptive platform trial that accelerates assessment and implementation of therapeutic interventions (pharmacological and non-pharmacological) for PASC. This grant opportunity is being administered by NHMRC on behalf of the Australian Government Department of Health and Aged Care.	<a href="https://www.grants.gov.au/Go/Show?GoUoid=9d495c0c-a3f9-4c05-9656-c4a4e7289d2f">https://www.grants.gov.au/Go/Show?GoUoid=9d495c0c-a3f9-4c05-9656-c4a4e7289d2f</a>	MRFF Administering Institution Only	08-Jan-24
OPEN					
Open	RHRF - Collaborative research requests	To foster a culture of cross-system collaboration, RHRF will consider requests to financially support and be involved in collaborative research projects. These may include applications for: - National Health and Medical Research Council (NHMRC) grants - Medical Research Future Fund (MRFF) grants - Australian Research Council (ARC) grants - Cooperative Research Centres (CRC) grants - Or other similar Australian based grant schemes	<a href="https://www.ramsayhealth.com.au/Ramsay-Research/Ramsay-Hospital-Research-Foundation/Applying-for-a-Grant">https://www.ramsayhealth.com.au/Ramsay-Research/Ramsay-Hospital-Research-Foundation/Applying-for-a-Grant</a>	Collaborative Research Requests - EOI open, rolling round	06-Feb-23
Open	RANZCP Sved Williams Scholarship for Aboriginal and Torres Strait Islander Perinatal and Infant Mental Health	This scholarship is established to contribute to achieving better outcomes for Aboriginal and Torres Strait Islander parents and their children in the first 1000 days of their children's lives; and to expand current knowledge and build capacity in Aboriginal and Torres Strait Islander perinatal and infant psychiatry.	<a href="https://www.ranzcp.org/grants-awards-giving/grants/research-grants/sved-williams-scholarship">https://www.ranzcp.org/grants-awards-giving/grants/research-grants/sved-williams-scholarship</a>	RANZCP Fellows and Associates (trainees) who identify as Aboriginal and/or Torres Strait Islander.	13-Jun-23
Open	Australian College of Nursing Scholarships	ACN is dedicated to helping you be the best you can be by providing access to scholarships, grants and awards. We are proud to administer a range of Australian Government Department of Health and Aged Care scholarships for undergraduate and postgraduate aged care, nursing and midwifery courses as well as scholarships for Aboriginal and Torres Strait Islander students studying entry-level health courses. Scroll down to find out more! We also offer grants and awards to support nurses to complete continuing professional development as well as postgraduate study and research. You can read more about these exciting opportunities at the bottom of this page.	<a href="https://www.acn.edu.au/scholarships#agedcare-allied-health">https://www.acn.edu.au/scholarships#agedcare-allied-health</a>		05-Sep-23
Open (till 31 March 2026)	MRFF Frontier Health and Medical Research Grant Opportunity	This grant opportunity offers funding to support medical research and medical innovation programs of research that deliver a 'moonshot' by creating a treatment for a currently serious and incurable health condition, through a series of linked projects. The program of research can propose to develop novel health technologies and/or re purpose existing health technologies in a novel way.	<a href="https://business.gov.au/grants-and-programs/mrff-2022-frontier-health-and-medical-research">https://business.gov.au/grants-and-programs/mrff-2022-frontier-health-and-medical-research</a>	NHMRC Administering Institution Only	16-Oct-23
Open - Annual	HETI Scholarships and Grants	Scholarships and grants offered by HETI aim to provide equal access to education in areas of need	<a href="https://www.heti.nsw.gov.au/Placements-Scholarships-Grants/scholarships-and-grants">https://www.heti.nsw.gov.au/Placements-Scholarships-Grants/scholarships-and-grants</a>		27-Nov-23
Coming Soon	National Breast Cancer Foundation Grants	1. <b>Collaborative Research Accelerator Grants</b> – foster and ecosystem of multidisciplinary researchers from different institutions and at different career stages that will address the most critical questions in breast cancer. Each accelerator will be funded up to \$25 million over five years. 2. <b>Research Project Grants</b> – provide support for investigator-initiated research projects with a clear line of sight to achieve Zero Deaths from breast cancer. 3. <b>Pink Sky Grants</b> – Support high risk, high reward research projects with significant paradigm shifting potential to revolutionise approaches to combating breast cancer.	<a href="https://nbcf.org.au/research-strategy/">https://nbcf.org.au/research-strategy/</a>		13-Nov-23

Date of Event	Name	Details	Registration	Last Updated
<b>Mar-24</b>				
06-Mar-24	Information session (virtual): SPHERE Seed Funding 2024 - Partnership Support Grant	The session aims to provide information and clarify any questions in relation to applying for the seed funding grant. For more information, contact Smita: s.khandelwal@unsw.edu.au	Email to: s.khandelwal@unsw.edu.au	04-Mar-24
06-Mar-24	SWS Research Grand Rounds (UNSW)	Please join the Clinical Campus for our regular SWS Research Grand Rounds seminar series featuring postgraduate candidates from UNSW, Western Sydney University and UoW presenting their south western Sydney-based projects. In 2024, the series will also include guest speakers with a focus on showcasing their research and strategies for combining research with clinical work and opportunities for professional development.	<a href="https://unsw.us8.list-manage.com/track/click?u=649bcab63408ee77fa6e70fec&amp;id=e20d93c617&amp;e=8d685b155f">https://unsw.us8.list-manage.com/track/click?u=649bcab63408ee77fa6e70fec&amp;id=e20d93c617&amp;e=8d685b155f</a>	04-Mar-24
07-Mar-24	Developing a Winning Translational Bid	The OHMR team, is excited to announce an upcoming online workshop being delivered by Strategic Project Partners on Developing a Winning Translational Bid. Established in 2005, Strategic Project Partners (SPP) has delivered successful outcomes for a broad range of commercial and government sector clients with a particular focus on Australia's research sector.	<a href="https://events.humanitix.com/strategic-project-partners-workshop-developing-a-winning-translational-bid-with-a-focus-on-mrff-frontiers">https://events.humanitix.com/strategic-project-partners-workshop-developing-a-winning-translational-bid-with-a-focus-on-mrff-frontiers</a>	19-Feb-24
07-Mar-24	CCI: Steps to success in consumer recruitment and involvement	The webinar will feature a panel discussion where questions will be answered about the steps you need to take to successfully recruit and involve consumers as research partners.	<a href="https://monash.zoom.us/webinar/register/WN_AB8zWRm-ZJ324xN_xXA#/registration">https://monash.zoom.us/webinar/register/WN_AB8zWRm-ZJ324xN_xXA#/registration</a>	04-Mar-24
08-Mar-24	Bloody Great Cause - International Women's Day	Celebrating International Women's Day 2024. Celebrate our local amazing women and help raise funds for a Bloody Great Cause. All proceeds go to fund The Haematology Clinical Research Unit at Concord Hospital. For International Women's Day and beyond, let us inspire others to understand and value women's inclusion and forge a better world #inspireinclusion.	<a href="https://drct-abloodygreatcause.prod.supporterhub.net/events/abloodygreatcause-iwd2024">https://drct-abloodygreatcause.prod.supporterhub.net/events/abloodygreatcause-iwd2024</a>	19-Feb-24
11-Mar-24	Medical Research Future Fund (MRFF) webinar: How to improve the health of rural, regional and remote communities with an MRFF grant	Join the Chief Executive Officer, Health and Medical Research Office, and a panel of experts and grant recipients for a practical workshop about using MRFF funding to improve health in rural, regional and remote areas. This webinar will discuss how health practitioners, researchers and health services can use research to address health needs in rural, regional and remote communities. This includes building research capability and sustainability, mechanisms and strategies for engaging in research and the MRFF support available for this research. A 'Questions and Answers' session will follow the presentation.	<a href="https://loghic.eventsair.com/mrff/091518/Site/Registration">https://loghic.eventsair.com/mrff/091518/Site/Registration</a>	04-Mar-24
19-Mar-24	Familial Cancer Syndromes and their Clinical Management	This webinar draws together interdisciplinary experts to focus on "familial Cancer Syndromes and Clinical Management", specifically to increase our understanding of inherited cancer risks and their clinical management skills. Speakers will share insights into the research around the genetic basis of inherited cancer syndromes, including familial breast cancer and endocrine tumour syndromes; the practical approaches and multidisciplinary perspectives that will contribute to the delivery of optimal care to individuals and families affected by familial cancer predisposition.	<a href="https://events.teams.microsoft.com/event/d6a2d261-7520-4305-8227-43ae889e9d3d@85542c9f-eea7-4e74-89b5-aadeb181fe60">https://events.teams.microsoft.com/event/d6a2d261-7520-4305-8227-43ae889e9d3d@85542c9f-eea7-4e74-89b5-aadeb181fe60</a>	04-Mar-24
20-21 Mar 24	Australian Healthcare week exhibition and program	Join thousands of industry peers at this event with seven dedicated free-to-attend stages tackling Digital Health, Nursing and Midwifery, Aged Care, Artificial Intelligence, Start-ups, Healthcare 2040 and Patient Experience.	<a href="https://www.ahwdigital.com.au/events-austhealthweek">https://www.ahwdigital.com.au/events-austhealthweek</a>	04-Mar-24
<b>Apr-24</b>				
02-Apr-24	LivingWorks safeTALK (Half-Day)	LivingWorks safeTALK is a half-day in-person workshop that equips participants with the necessary skills to identify individuals with suicidal thoughts. This workshop teaches attendees how to openly and directly address the topic of suicide and connect individuals to a safe support network connection for further assistance.	Booking is essential - To secure your spot, please email Rebecca Stamopoulos at r.stamopoulos@westernsydney.edu.au with your details	19-Feb-24
16-Apr-24	Research Translation: Taking your research to the bedside	This webinar will focus on research translation, and give examples of how research findings can be used to drive changes in health care, including examples of knowledge into action, guideline development and policy-making, and ethical considerations. Our panellists will share lessons they have learnt in the process – especially what they would do again and what to avoid!	<a href="https://monash.zoom.us/webinar/register/WN_70W3Xyv2wOALTfqiQ#/registration">https://monash.zoom.us/webinar/register/WN_70W3Xyv2wOALTfqiQ#/registration</a>	04-Mar-24
<b>May-24</b>				
06-May-24	LivingWorks ASIST Workshop (2 Days)	LivingWorks ASIST (Applied Suicide Intervention Skills Training) is considered the gold standard in suicide prevention training. This workshop aims to enhance participants' skills and confidence in intervening with individuals at risk of suicide. Attendees will learn how to recognise signs of suicidal thoughts, provide effective interventions, and develop safety plans to support and safeguard individuals in crisis.	Booking is essential - To secure your spot, please email Rebecca Stamopoulos at r.stamopoulos@westernsydney.edu.au with your details	19-Feb-24
8-9 May 24	Zero Childhood Cancer National Symposium	The Zero Childhood Cancer National Symposium will showcase the scientific, translational, and medical advances achieved within the broad field of Precision Oncology, helping to expand knowledge and understanding of the key challenges in tackling childhood cancers, while also presenting an enriching networking opportunity. The theme for this meeting is "Precision in Action: Collaboration driving cancer breakthroughs". **Travel Grants available**	<a href="https://aacb.eventsair.com/zero-national-symposium/">https://aacb.eventsair.com/zero-national-symposium/</a>	05-Feb-24
<b>Jun-24</b>				
14-15 Jun 24	Biennial Surgical Robotics and Innovation Summit (SRIS)	Australia's leading multidisciplinary and multi-specialty surgical robotics and innovation conference run by RPA Hospital's Institute of Academic Surgery. The Summit brings together leading clinicians, industry sponsors and researchers from Australia and around the world to share experiences and evidence, with a view to improving patient outcomes through technology and collaboration. The Summit will feature Abstract Sessions, an opportunity for clinicians at all stages of their careers to present on research that relates to surgical robotics or innovation.	<a href="https://www.slhd.nsw.gov.au/events/robotics-summit/">https://www.slhd.nsw.gov.au/events/robotics-summit/</a>	11-Dec-23
24-26 June 2024	14th International NanoMedicine Conference	Discover new novel research that may lead to prevention, diagnosis and/or treatment of some of the most challenging diseases, in an environment conducive to networking with colleagues from around the world.	<a href="https://www.oznanomed.org/">https://www.oznanomed.org/</a>	11-Dec-23
<b>Jul-24</b>				

15-17 July 2024	2024 National Mental Health & Suicide Prevention Conference 2024 National All Abilities Initiatives NDIS Conference	Call for papers is now open and abstracts are now sought for from researchers, advocates, health practitioners, NGOs, governments departments, primary health networks and community organizations who wishes to share their research outcomes, community program successes and challenges as well as lived experience and personal journeys.	<a href="https://icsconferences.org/">https://icsconferences.org/</a>	19-Feb-24
22-24 July 2024	2024 National Closing the Gap in First Nations Health Conference 2024 National Chronic Diseases Integrated Team Care Conference	Call for papers is now open and abstracts are now sought for from researchers, advocates, health practitioners, NGOs, governments departments, primary health networks and community organizations who wishes to share their research outcomes, community program successes and challenges as well as lived experience and personal journeys.	<a href="https://icsconferences.org/">https://icsconferences.org/</a>	19-Feb-24
<b>Aug-24</b>				
14-16 Aug 2024	National Nursing Forum	The NNF is the Australian College of Nursing's (ACN) signature annual leadership and educational event, bringing together nurses, students, and other health professionals from around the country and across the globe. The 2024 NNF will take place from Wednesday 14 – Friday 16 August 2024 at the Cairns Convention Centre or virtually.	<a href="https://www.acn.edu.au/events/national-nursing-forum?utm_source=free_enewsletter&amp;utm_medium=email&amp;utm_campaign=national_nursing_forum_2024&amp;_z=3q4So&amp;_zl=RdXP2">https://www.acn.edu.au/events/national-nursing-forum?utm_source=free_enewsletter&amp;utm_medium=email&amp;utm_campaign=national_nursing_forum_2024&amp;_z=3q4So&amp;_zl=RdXP2</a>	04/03/2024
<b>Sep-24</b>				
<b>Oct-24</b>				
<b>Nov-24</b>				
27-Nov-24	2024 AAMRI Convention	SAVE THE DATE - Dinner in The Great Hall, Parliament House on the 27 November 2024.	To be announced.	11-Dec-23
<b>Dec-24</b>				
<b>Ongoing Seminars</b>				
Ongoing Program	eviQ Education	eviQ Education is a program of the Cancer Institute NSW opens in a new tab or window which provides medical, nursing, allied health and general ward staff with online learning resources. All resources aim to standardise and promote evidence based best practice when caring for patients with a cancer diagnosis.	<a href="https://education.eviq.org.au/?utm_source=CINews&amp;utm_medium=email&amp;utm_campaign=November2023news">https://education.eviq.org.au/?utm_source=CINews&amp;utm_medium=email&amp;utm_campaign=November2023news</a>	11-Dec-23
Ongoing Program	Longitudinal modelling for population health researchers	This short course aims to develop comprehensive knowledge of application of commonly used statistical models for longitudinal data analysis such as multilevel and generalized estimating equation (GEE) models in context of various study designs for population health research problems. In addition, it will cover longitudinal models for interrupted time series and ecological momentary analysis such as segmented regression and random location-scale model. Note that there's a fee for this short course which is 237 aud per module for up to four modules. Students can do two minimum and three or all four. It's an advanced course. High quality is guaranteed. Western alumnus or students gets a discount of 50%.	Please contact Dr Haidar if interested <a href="mailto:H.Mannan@westernsydney.edu.au">H.Mannan@westernsydney.edu.au</a>	04-Oct-23
Ongoing Program	Stanford Quality Improvement Program 2023	The SPHERE Palliative Care Clinical Academic Group (CAG) will again be running the Stanford Quality Improvement Program in 2023. Applications are now open for teams who wish to participate in this round; please see attached application form. We encourage teams to get in touch if intending to apply to ensure their proposed project is suitable. Teams must be led by an individual employed by a SPHERE health service partner, all members must be able to attend all activities, and approval must be given by their respective service director. Please contact Kirsten Jakobsen ( <a href="mailto:k.jakobsen@unsw.edu.au">k.jakobsen@unsw.edu.au</a> ) you have any questions about this year's program, and please forward to anyone who may be interested in participating.	<a href="mailto:k.jakobsen@unsw.edu.au">k.jakobsen@unsw.edu.au</a>	24-May-23
Ongoing Program	Continuing Professional Development (CPD)	Continuing professional development (CPD) is central to lifelong learning and constitutes a vital aspect for keeping healthcare professionals' knowledge and skills up to date. At ACN we are dedicated to helping you meet your CPD requirements and ongoing education needs. Our CPD centre offers you an extensive range of tailored evidence-based products to suite your lifestyle, workplace, and education needs. Choose from a variety of study modes including online, face-to-face and webinars with new products being added regularly.	<a href="https://members.acn.edu.au/Public/cpd-centre/cpd-search.aspx?CPDCentreTabs=3&amp;utm_source=Monthly%20CPD%20Email&amp;utm_medium=ACN%20Website&amp;utm_term=NSW%20Face%20to%20Face%20CPD#CPDCentreTabs">https://members.acn.edu.au/Public/cpd-centre/cpd-search.aspx?CPDCentreTabs=3&amp;utm_source=Monthly%20CPD%20Email&amp;utm_medium=ACN%20Website&amp;utm_term=NSW%20Face%20to%20Face%20CPD#CPDCentreTabs</a>	10-Jul-23
Ongoing Program	Youth Mentorship Program	The involvement of young people as partners in health research is critical. This is to ensure that research design, translation and service delivery are accessible and meaningful to young people. Despite this, consumer involvement particularly amongst children and adolescents, continues to be uncommon. Involving children and young people in health research has the potential to enhance the quality and relevance of research conducted, and also the experiences of health consumers involved in co-creation.	<a href="https://forms.office.com/Pages/ResponsePage.aspx?id=pM_2PxXn20i44Qhnufn7o959XcpXlENEt7KNg5LjcatUODlCNtVXQORZnkizNTBFNjIMRzk1VEQ1MS4u">https://forms.office.com/Pages/ResponsePage.aspx?id=pM_2PxXn20i44Qhnufn7o959XcpXlENEt7KNg5LjcatUODlCNtVXQORZnkizNTBFNjIMRzk1VEQ1MS4u</a>	26-Jun-23
Ongoing Program	Exploring consumers' and nurses' experiences of the Mental State Examination (MSE)	Did a Registered Nurse ask you some questions about your thoughts and feelings and other experiences related to your mental health? If so, the research team would like to invite you to participate in our research study. This study aims to explore participants' and nurses' experiences of the MSE in acute in-patient mental health settings to improve therapeutic relationships between nurses and people using mental health services.	<a href="https://cdn-au.mailnsd.com/47157/-HkuemQR0_vsA_WNj7Jdc5PClUH0IdM4ycAOv7dVrgY/1686717779/2865172.pdf">https://cdn-au.mailnsd.com/47157/-HkuemQR0_vsA_WNj7Jdc5PClUH0IdM4ycAOv7dVrgY/1686717779/2865172.pdf</a>	26-Jun-23
Ongoing Program	Introduction to Consumer Involvement in Health Research	Introduction to Consumer Involvement in Health Research is a free online training course, provided by Health Consumers NSW for Sydney Health Partners. It provides a basic understanding of the why, what and how of consumer involvement in health research including: the rationale for consumer involvement in health research; and different ways that health consumers can be involved in health research. The training module takes about 90 minutes to complete and can be undertaken at a time that suits you.	<a href="https://www.hcnsw.org.au/training-events/cci101/">https://www.hcnsw.org.au/training-events/cci101/</a>	18-Sep-23



# PhD Scholarship Top-up Awards 2024 Guidelines

## Background

The SPHERE Cancer CAG (Clinical Academic Group) was established in 2017. The SPHERE Cancer CAG sits within a collaborative framework that incorporates four health networks and more than 15 health, education, and research sites across the state. The member organisations of the SPHERE Cancer CAG provide cancer care services to 40% of the NSW patient population.

The SPHERE Cancer CAG established 4 key focus areas of research:

- 1) Bringing omics into clinical practice
- 2) Living better with and after cancer
- 3) Poor outcomes cancers
- 4) Reducing unwanted clinical practice variation

## INTRODUCTION

The SPHERE Cancer CAG will support PhD students with a strong alignment to the SPHERE Cancer CAG via award a number of 1-year and 2-year PhD Scholarship Top-up Awards to students who have received funding via a peer-reviewed, competitive scholarship through 1) UNSW 2) UTS 3) WSU and enrolled in a faculty which is strongly aligned to the Cancer CAG. (see eligibility criteria for more details).

The SPHERE Cancer CAG PhD Scholarship Top-up Awards are designed to enhance the translational cancer research capabilities of PhD students who possess research interests aligned to the key focus areas of research of the SPHERE Cancer CAG. This will be achieved by promoting access to a strong foundation of research support services, including opportunities for professional development and the mentoring and expertise of experienced translational cancer researchers.

Recipients of the SPHERE Cancer CAG PhD Top-up Awards are expected to participate in SPHERE Cancer CAG led activities and events and to contribute to the SPHERE Cancer CAG when opportunities arise.

### Available Award

1-year, 2-year and (up to \$10,000 stipend per year)

- Awards will be paid for the duration of the PhD program (max of 2 years, no later than 30 June 2026), subject to satisfactory progress.
- Awards are competitive and merit-based, and the research project must be aligned to SPHERE Cancer CAG key focus areas of research, including demonstrating the translational application of the research as well as an awareness of the importance of consumer engagement.

## ELIGIBILITY

Students will be eligible for consideration for a SPHERE Cancer CAG PhD Scholarship Top-up Award in 2024 if they:

1. Have applied for and won a competitively awarded scholarship that either commences or successfully continues for more than 6 months into 2024 e.g., the Domestic Research Training Program (RTP), University Postgraduate Award (UPA), UTS Doctoral Scholarship (UTSD) or NHMRC for domestic applicants.
2. Are undertaking a full-time PhD degree UTS, WSU or UNSW with a strong alignment to the SPHERE Cancer CAG. Students may be currently enrolled and in any year of full-time study during the 2024-2025 UTS, WSU or UNSW academic year. 1 year top-up awards must be in 3<sup>rd</sup> or final year of study.

3. Have a research interest aligned to the key focus areas of research of the SPHERE Cancer CAG and can demonstrate the translational relevance of this research to improvements in cancer patient care and clinical outcomes. Key focus areas of research of the SPHERE Cancer CAG include bringing omics into clinical practice, living better with and after cancer, poor outcomes cancers and reducing unwanted clinical practice variation.
4. Have a principal (primary) or joint principal (joint primary) supervisor who is on the current SPHERE Cancer CAG membership list. Although not compulsory, every effort should be made to identify a potential clinical PhD supervisor.
5. Are not currently receiving or had previously received PhD scholarship awards from other Cancer Institute NSW funded sources.
6. Have a letter of support from the primary supervisor which also confirms that there are sufficient resources to support the project.

## CONDITIONS OF THE AWARD

1. Applications received after the closing date will be regarded as late and will not be considered.
2. The eligibility criteria must be met.
3. PhD Students receiving the SPHERE Cancer CAG PhD Scholarship Top-up Award will be expected to actively participate in the Cancer CAG PhD Skills & Development Program throughout their Scholarship, including but not limited to:
  - Attending and actively participating in an annual full-day Cancer CAG PhD Skills & Development workshop. The workshops will provide specific skills and knowledge related to translational research and research communication.
  - Presenting at an approved Postgraduate Research Seminar at least once during their candidature and supporting fellow PhD Top-up recipients by attending any regular seminar sessions throughout the year.
  - Contributing when requested to the newsletter or website with articles, and generally participating in the Cancer CAG and attending CAG events where possible.
  - Attending events hosted by the UTS or UNSW Graduate Research Schools (GRS).
  - Attending a minimum of **4** NSW Statewide Seminar Series.
  - Submitting a Progress Report by January each year.
4. Successful applicants must maintain full-time enrolment at your organisation and satisfactorily complete an annual progress review. If successful, part time enrolment may be considered in individual circumstances.
5. Successful applicants must correctly acknowledge the SPHERE Cancer CAG's and Cancer Institute NSW support in any documentation related to this scholarship in accordance with the SPHERE Cancer CAG Funding Acknowledgement Guidelines and the SPHERE Cancer CAG Guidelines for Logo Use and promote the SPHERE Cancer CAG's translational cancer research activities amongst other students.
6. Successful applicants will be required to sign a Letter of Acceptance and agree to these conditions in writing.

## APPLICATION PROCESS

Funding Year	Applications Open	Applications Close	Funding Commences
2024	29 January 2024	18 March 2024	No later than 1 July 2024

1. Complete the SPHERE Cancer CAG PhD Scholarship Top-up Award Application Form in conjunction with these guidelines.
2. Prepare additional supporting documents:
  - a. A letter from your Faculty or GRS confirming receipt of a competitively awarded scholarship (e.g. APA or equivalent)
  - b. Curriculum vitae including details of key academic marks awarded from previous degrees
  - c. Certified copies or originals of academic transcripts (clearly legible)
  - d. Letter of support from the Primary or Principal supervisor which also confirms that there are sufficient resources to complete the research project in accordance with your organisation's WHS standards.
3. Submit the completed application form **as a WORD DOCUMENT** with all other supporting documents as a **SINGLE PDF**, via email to [SPHERECancerCAG@unsw.edu.au](mailto:SPHERECancerCAG@unsw.edu.au) with subject line PhD Scholarship Top-up.

The deadline for submission of applications is **5pm, 18 March 2024**.

## FURTHER INFORMATION

Further information can be obtained by contacting the SPHERE Cancer CAG team.  
[SPHERECancerCAG@unsw.edu.au](mailto:SPHERECancerCAG@unsw.edu.au)

## APPENDIX

### **SPHERE Cancer CAG Key Focus Areas of Research Cancers with Poor Outcomes**

#### **Focus Areas of Research**

We've seen huge leaps forward for some cancers and little to no improvement in others; these include brain, pancreas, ovary and all rare cancers. We're making these cancers our priority. We're finding better ways to fund, treat and manage these cancers, paying special attention to the advanced stages of disease.

#### **Lead**

Professor David Goldstein

### **Bringing Omics to Clinical Practice**

There's been an explosion of information on how the human genome, proteome and metabolome affect cancer. Now it's time to translate these insights into better clinical practice. We're linking 'omic' data with clinical and radiological data to better diagnose and treat cancer.

Professor David Thomas

### **Reducing Variation in Clinical Practice**

Differences in how cancer patients are cared for can be costly - to the patient and our health system. These variations are avoidable. Big data helps us understand how and why clinical variation takes place, and what the consequences are. We're building a unique platform that collects, analyses and reports on cancer care accurately. This will ensure a consistent approach to care that reduces costly and traumatic variations in the future.

Associate Professor Winston Liauw

### **Living Better with and After Cancer**

Cancer is a journey. It requires whole-of-life care from diagnosis through to treatment, recovery and survival as well as palliative care. There are hundreds of thousands of people in NSW who have had or are living with cancer. Both groups need hands-on support and care. We're finding innovative ways to make care better, more personal and more affordable. That way, more patients can live better lives – with and after cancer.

Professor Meera Agar

# PhD Scholarship Top-up Awards 2024 Application Form

## NOTE: Prior to completing this application form, ensure that you have done the following

- Read and understood all/any Guidelines relevant to the Scholarship being applied for
- Provided all relevant information and documentation.
- NOTE: Incomplete applications or missing documents will result in your application not being considered.
- The definition of 'Organisation' is the university in which you are currently enrolled - either WSU, UTS, or UNSW.

## 1. Scholarship Details

### SPHERE Cancer CAG PhD Scholarship Top-up

Scholarship being applied for: Please select one

- 1-year top-up  
 2-year top-up

## 2. Applicant Details

Student Number:

Family Name:

Given Name:

Date of Birth (dd/mm/yyyy):

Domestic Student

International Student

Email Address:

## 3. Current Scholarships

Are you currently receiving any other awards or scholarships at your organisation?

Yes\*

Pending\*

No

\*If Yes or Pending, please provide information below

What is the name of the award/scholarship?

1.   
2.   
3.

What is the annual monetary value of the award(s)?

1.   
2.   
3.

What is the exact duration of the award?  
Please provide **exact** start and expiry date(s).

1.   
2.   
3.

## 4. Current Program

### 4a. Enrolment Details

University and Faculty:

Date of Commencement:

School:

Expected Completion Date:

Enrolment Status: Full-time *Note: part-time students are not eligible for the award*

### 4b. Supervisor Details

*NOTE: Primary or principal supervisor must be a listed SPHERE Cancer CAG Member. Refer to the guidelines for further details.*

Name of Primary (Principal) Supervisor:

Name of Joint Primary (Joint Principal) Supervisor:

5. Academic Qualifications – Undergraduate & Postgraduate									
Details of Previous Study	Name of Award Held (if any)	Monetary Value	Period Held		Institution	Years of Enrolment		Year Graduated	Hons Mark (if any)
			From	To		From	To		
<i>Example: BSc (Hons)</i>		\$			University of XYZ	2002	2007	2008	85% (1 <sup>st</sup> class)

6. Research Output							
Provide details of any previous research publications or presentations.							
	Conference Poster Presentation	Conference Oral Presentation	Book / Chapter	Research Report	Peer-Reviewed Journal Article	First / Sole Author	
<i>Example: Finding the cure for the common cold. Smith A.B., Jones C.D. &amp; Brown E.F. Nat Med 45: 7566-7570 (2013)</i>							

7. Research Plan (max 2 pages)
Topic Area: <input type="text"/>
Project Name: <input type="text"/>
Background: <input type="text"/>
Hypothesis/Aims: <input type="text"/>
Progress To-Date: <input type="text"/>
Key Objectives and Milestones: <i>We suggest presenting the milestones for each year of study.</i> <input type="text"/>
Publication Plan (please briefly describe your plan to submit the PhD thesis and/or a manuscript from the thesis to an academic journal within the 12 months of receiving the scholarship): <input type="text"/>

8. Lay Summary
Briefly describe your research project in non-technical language suitable for the wider community (max 250 words). <i>This will be read by the SPHERE Cancer CAG Consumer Advisory Panel (CAP) – refer to section 12 of this application form</i> <input type="text"/>

### 9. Relevant Research Experience

Briefly describe your previous research experience including any relevant employment (max 250 words).

### 10. SPHERE Cancer CAG Key Areas of Research

To which (if any) of the following SPHERE Cancer CAG key areas of research does your research apply?

- Bringing omics into clinical practice
- Living better with and after cancer
- Poor outcomes cancers
- Reducing unwanted variations in clinical practice

### 11. Translational Relevance

Describe how your research will translate into improvements in patient care and clinical outcomes (max 250 words).

### 12. Consumer Engagement

Describe how your research has engaged/will engage cancer consumers in the planning, implementation and information dissemination stages (max 200 words). *This will be read by the SPHERE Cancer CAG Consumer Advisory Panel (CAP). Before completing this section, discuss with your supervisor.*

### 13. Checklist (see guidelines for full details of documents required)

I have included:

- A fully completed scholarship application form
- A letter confirming my competitively awarded scholarship (e.g., RTP or equivalent)
- Certified copies or originals of academic transcripts (clearly legible)
- A Curriculum vitae
- A letter from my primary supervisor supporting my application and indicating that there are sufficient resources to complete the research project in accordance with my organisation's WHS standards

Any additional comments regarding your application:

### 14. Privacy Notification

The University of New South Wales (UNSW) acknowledges and respects the privacy of individuals. The information you provide on this application for is "personal information" as defined by the Privacy and Personal Information Act, 1998 (NSW) (the Act). The information you provide is collected and held by the SPHERE Cancer

CAG in order to assess your application and for administrative and statistical purposes. You have the right of access to, and alteration of, the information concerning yourself in accordance with the Act and the UNSW Privacy Management Plan. The SPHERE Cancer CAG will not disclose your personal information without consent and without due cause, except as required by law. You have the right to refuse this consent, but if the consent is not given your application may not be processed.

I agree to the conditions described in the Privacy Notification: **Yes/ No**      Date:

### 15. Declaration

In submitting this application for a SPHERE Cancer CAG PhD Scholarship Top-up:

I have:

- Answered all questions on this form truthfully.
- Read the relevant guidelines and understand the eligibility criteria and conditions of this award.

I agree to:

- Notify the SPHERE Cancer CAG of any change to the information I have given in this application.
- Authorise the SPHERE Cancer CAG to obtain from any other educational institution or relevant authority, at any time, details which relate to my scholarship application including information concerning my enrolment record, examination results, enrolment variation and attendance.
- Abide by the SPHERE Cancer CAG conditions of the award, as amended from time to time.
- Comply with my institution rules on admission, enrolment and other policies on the conduct of research.
- Undertake to obtain ethical clearance and satisfy any other regulatory requirements before commencing any research to which those requirements may apply.

I understand that:

- My organisation or the SPHERE Cancer CAG may disclose information concerning this application to any person or body that my organisation or the SPHERE Cancer CAG considers has legitimate interest in receiving it and I consent to such disclosure.
- My organisation or the SPHERE Cancer CAG may vary or cancel any decision it makes if the information I have given is incorrect or incomplete.
- I will not be sent notification that my application has been received.
- I must not receive scholarships from different institutions simultaneously.
- My organisation or the SPHERE Cancer CAG is not responsible for the loss of any documents submitted.
- Submitted documents become property of my organisation or the SPHERE Cancer CAG.
- My application processing will be delayed if I have not provided all documents as detailed throughout the form and on the checklist.
- If I am offered a scholarship, I will not be able to defer that offer.
- Giving false or misleading information is a serious offence under the Criminal Code (Commonwealth).
- My application will not be processed if I have not confirmed that I agree with this Statement **by checking the box below and dating this application form with the date of submission.**

### 16. Agreement

APPLICANT NAME	<input type="text"/>	I agree with the Declaration Statement	Yes No	DATE	<input type="text"/>
----------------	----------------------	--	--------	------	----------------------



**THE APPLICATION MUST BE LODGED BY THE CLOSING DATE:**

**18 March 2024, 5pm**

Email the application form as a Word document & all other supporting documents scanned as a single PDF, to  
[SPHERECancerCAG@unsw.edu.au](mailto:SPHERECancerCAG@unsw.edu.au)



Maridulu **Budyari Gumal**

Working together for good health and wellbeing

# SPHERE Seed Funding Grant Scheme 2024 – Partnership Grant

## Guidelines and Application Form

**MARIDULU BUDYARI GUMAL**

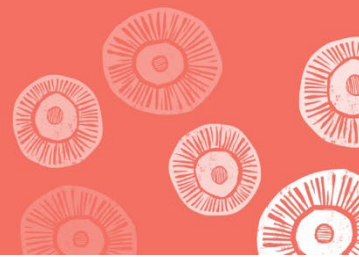
Sydney Partnership for Health, Education,  
Research and Enterprise (SPHERE).

Level 4,

Ingham Institute for Applied Medical Research,  
1 Campbell Street, Liverpool NSW 2170

PO Box 3151, Liverpool NSW 2170

+61 (0) 2 8738 8864  
[thesphere.com.au](http://thesphere.com.au)



## INTRODUCTION AND OBJECTIVE

Maridulu Budyari Gumal, the Sydney Partnership for Health, Education, Research and Enterprise (SPHERE) combines 15 thought-leading organisations in the Sydney region. Each partner is renowned for research, innovation and education. Each has specialist healthcare knowledge and a heritage of game-changing initiatives to their name. We are building on this work, taking the best from each discipline to change the way we do healthcare – for good. As partners, we are committed to working together in a spirit of collaboration.

The SPHERE Seed Funding Grant Scheme 2024 (Investigator initiated Partnership Grant) builds on from our Big Ideas model and 2023 Seed Funding that is intended to encourage new large-scale, ambitious programs of work that bring people together across and beyond the SPHERE partnership. Submissions should focus on ideas that foster broad collaboration across Platforms (previously Strategic Platforms), Clinical Themes (previously Clinical Academic Groups) and ideally should include groups or organisations outside SPHERE.

Project ideas should connect discrete knowledge and skills and capitalise on SPHERE's strengths. Proposals must be substantive, cross-disciplinary initiatives with evidence of a clear pathway to attract significant additional funding from other internal and/or external sources to sustain and build ongoing research.

## ELIGIBILITY

In order to be successful in acquiring SPHERE Seed Funding (Investigator initiated Partnership Grant) Support, applications will need to:

- Identify who the industry partner is
- Provide evidence of cash support for the project from the partner organisation
- Show how the research will leverage a larger funding opportunity.

In order to be successful applications will need to demonstrate:

- How they have involved collaborations across the SPHERE network and beyond;
- Active participation of consumers in the design and delivery and policy setting implications arising from the project;
- EMCR involvement and career progression in their proposal. EMCRs are researchers within 10 years of their most recent relevant highest degree;
- How the research is a Big Idea that solves a wicked problem or is the “missing link” in their journey to a larger funding opportunity. A missing link may refer to feedback from an earlier “near miss” grant applications that implied a critical knowledge gap and/or how ALL data arising from the study (confirming or rejecting the research question) will lead to meaningful and significant progression of the proposal.

## FUNDING

Total funding of \$500,000 is available in this round of SPHERE's Seed Funding Grant Scheme to support up to 2-5 grants of \$100,000-\$200,000 according to merit. Funding is contingent on obtaining partnership success within eight months of the SPHERE award. The total funding will not exceed the cash co-contribution provided by the industry partner. Awards that are unsuccessful in achieving the partnership grant will return to the following year funding pool. All applicants will have the opportunity to reapply, potentially building on feedback or further collaboration that has strengthened the original submission for partnership success.

Payment of grants awarded under the SPHERE Seed Funding will be made directly to the Chief Investigator A who must be employed by a SPHERE partner. The funds must be spent in accordance with the budget proposed in the grant application. Only direct research costs will be covered. No on-costs or indirect costs will be covered. Applicants should consider any on-costs while preparing their application.

Grants are non-renewable and must be completed by agreement within the timeframe for which the funding is granted. No additional funding will be provided to complete the project.

All projects funded under the scheme will be required to submit annual progress reports with the final report against the key performance indicators developed by the applicants as part of the submission process (see section 'Project Plan').

SPHERE reserves the right not to award any grants if applications do not meet a minimum quality.

## SUPPORT

SPHERE can facilitate networking opportunities and offer guidance to applicants seeking to form partnerships. This support may include, but is not limited to, organising workshops to foster connections with platforms and/or clinical themes for collaboration, and providing valuable insights and advice on potential partners that align with specific objectives.

## TIMELINE

The milestones for the Seed Funding Grant Scheme 2024 are:

Milestone	Deadline
Call for applications	Friday, 12 January 2024
Close of applications	Friday, 26 April 2024
Eligibility and essential criteria check for applications received	Early May 2024
Applications sent to review panel	Early May 2024
Review panel scores received by SPHERE	Early June 2024
Meeting with the review panel to discuss recommended projects for funding	Mid-Late June 2024
Review panel recommendations reported to Council	Early July 2024
Notification to applicants	Mid July 2024
Disbursement of funds; project commencement	According to grant agreement
Progress report due – annually (depending on project duration)	According to grant agreement
Final report due 3 months following project completion	According to grant agreement

## APPLICATION EVALUATION

Upon receipt, applications will be reviewed for completeness and adherence to submission requirements. Those that do not meet essential eligibility requirements, or word and page limits will be deemed ineligible for review. Eligible applications will be reviewed by a review panel, consisting of independent members and representatives of the SPHERE Council/ Executive, through a competitive process based on merit and strategic value. The final decision will be notified to the SPHERE Council. Applicants will be notified in writing of the evaluation outcome.

Applications will be assessed based on the following criteria:

- Potential translation of research into practice change and/or improve service delivery and/or health outcomes.
- CIA is a SPHERE member.
- The project must engage broad collaboration and confirms co-production and delivery with at least three (3) other SPHERE Platforms and/or Clinical Themes. Partners outside SPHERE (state, national and international) should have demonstrated capacity to adhere to NHMRC principles governing RTC accreditation.
- Includes Consumer and Community representation with clear evidence of co-design and participation as an investigator.
- Includes Biostatisticians, Health Economists, Implementation Scientists as Investigators, where appropriate.
- Demonstrates capacity to leverage additional funding.
- A detailed and justified budget.

Applications will be scored based on the following criteria:

#	Criteria	%
1.	<b>Project Significance and Impact</b> <ul style="list-style-type: none"> <li>• Relevance to the aims of the SPHERE Seed Funding Scheme</li> <li>• Justification for consideration as a “Big Idea” or the “Missing Link” in an unfunded big idea</li> <li>• Potential translation of research findings into practice</li> <li>• Improves health outcomes</li> <li>• Nationally and internationally competitive</li> </ul>	20%
2.	<b>Project Plan</b> <ul style="list-style-type: none"> <li>• Feasible</li> <li>• Appropriate</li> <li>• Innovative</li> </ul>	20%
3.	<b>Potential to leverage future funding</b> <ul style="list-style-type: none"> <li>• Use of Seed funding necessary to accelerate Big Idea</li> <li>• New leverage investment</li> <li>• Clear pathway to sustainable future funding</li> <li>• Identifies risks (eg COVID/workforce/ethics delays) and strategies to mitigate where possible</li> </ul>	40%

4.	<p><b>Team</b></p> <ul style="list-style-type: none"> <li>• Inclusion of early and mid-career researcher(s) in the project leadership team</li> <li>• Involvement of at least three (3) Clinical Themes and/or Platforms</li> <li>• Consumer and Community Involvement</li> <li>• Multi-disciplinary including Biostatisticians, Health Economists and Implementation Scientists</li> <li>• Involvement of groups or organisations beyond SPHERE (state, national and international)</li> </ul>	20%
----	---	-----

## SUBMITTING AN APPLICATION

The following application template must be used to complete your application. Applications should provide all requested information and not exceed the word count and page limits, use single spaced 11-point Arial font. Only information provided in the application will form the basis of the review process.

Completed applications must be submitted by email to [s.khandelwal@unsw.edu.au](mailto:s.khandelwal@unsw.edu.au) and received by **Friday, 26 April 2024**. Incomplete or late submissions will not be accepted.

Applications should be submitted as one PDF file AND one editable Word document (supporting documents only required for cash contributions from leveraged partners). Please label the application using the following format:

- SPHERE\_Seed Funding Grant Scheme 2024\_Partnership Grant Application\_CIASurname.pdf
- SPHERE\_Seed Funding Grant Scheme 2024\_Partnership Grant Application\_CIASurname.docx

Please ensure that the combined size of attached files does not exceed 20MB. Emails with attachments greater than this may not be received. Undeliverable emails will not be considered as a reason to accept late applications.

If you have any questions or would like to discuss your submission, please contact Smita Khandelwal, Business Outcomes Coordinator, SPHERE at [s.khandelwal@unsw.edu.au](mailto:s.khandelwal@unsw.edu.au)

**SPHERE SEED FUNDING GRANT SCHEME 2024  
(INVESTIGATOR INITIATED PARTNERSHIP GRANT)  
APPLICATION TEMPLATE**

**SECTION A – PROJECT OVERVIEW**

**1. Project Title**

**2. Project Description**

Provide a scientific description of the project aims and methods. 500 words

**3. Justification of the Project as a Big Idea**

Identify how the project aligns to the SPHERE Seed Funding Scheme which aims to support innovative, ambitious programs of work that foster collaborations among Platforms and Clinical Themes. 300 words

#### 4. Improving Outcomes

Outline how the project will improve health outcomes. 300 words

#### 5. Collaboration

Outline how the program aligns with the aim to bring together researchers (including early and mid-career) from multiple disciplines across different organisations, at state, national or international level. Confirm the co-production and delivery of the collaboration with other Platforms and Clinical Themes. 300 words

<b>Platforms Engaged</b> (tick all that apply)	<input type="checkbox"/> Clinical Trials and Data <input type="checkbox"/> Implementation Science <input type="checkbox"/> Knowledge Translation <input type="checkbox"/> Healthy Populations and Environments (previously Healthy Urban Environments) <input type="checkbox"/> Innovation (previously Frontiers Technology)
<b>Clinical Themes Engaged</b> (tick all that apply)	<input type="checkbox"/> Aboriginal Health and Wellbeing <input type="checkbox"/> Age and Ageing <input type="checkbox"/> Cancer <input type="checkbox"/> Cardiac and Vascular Health <input type="checkbox"/> Child UnLimited (Kids to Adults) <input type="checkbox"/> Diabetes, Obesity and Metabolic Disease <input type="checkbox"/> Early Life Determinants of Health <input type="checkbox"/> Genome Connect <input type="checkbox"/> Infectious Disease, Immunity and Inflammation <input type="checkbox"/> Maternal and Women’s Health <input type="checkbox"/> Musculoskeletal Health <input type="checkbox"/> Neuroscience, Mental Health and Addiction <input type="checkbox"/> Palliative Care <input type="checkbox"/> Respiratory, Sleep, Environmental and Occupational Health
<b>Other Partners Engaged</b> (tick all that apply)	<input type="checkbox"/> Sydney Health Partners <input type="checkbox"/> NSW Regional Health Partners <input type="checkbox"/> Other national <input type="checkbox"/> Other international

**SPHERE Platforms and Clinical Themes Executive Lead** confirming consumer or clinician/ research co-production and alignment with their membership and its priorities

1) Platform/ Clinical Theme Exec name			
Signature		Date	
2) Platform/ Clinical Theme Exec name			
Signature		Date	



3) Platform/ Clinical Theme Exec name			
Signature		Date	

**6. Potential for funds leverage**

Outline how the funds will be leveraged to ensure long term sustainability of the project. 200 words

**7. Translation of Research Outcome**

Outline how findings of research might be translated into practice change and/or improve service delivery and/or health outcomes. 200 words

**8. Consumer and Community Involvement**

Outline how the project involved consumers in its design and continued participation in the review and dissemination of results. 300 words

**9. Project Plan (Maximum 2 pages)**

Detail the project plan from inception to completion. Where possible, include SMART objectives (specific, measurable, achievable, realistic, and time-bound) and consider knowledge translation.

	Project Objective	Activity	Timeframe	Evaluation Measure(s)
Project initiation	•	•		•
	•	•		•
	•	•		•
Research activity related to project	•	•		•
	•	•		•
	•	•		•
	•	•		•
	•	•		•
	•	•		•

Project dissemination and future steps	<ul style="list-style-type: none"> <li>•</li> </ul>	<ul style="list-style-type: none"> <li>•</li> </ul>		<ul style="list-style-type: none"> <li>•</li> </ul>
Project completion	<ul style="list-style-type: none"> <li>•</li> </ul>	<ul style="list-style-type: none"> <li>•</li> </ul>		
	<ul style="list-style-type: none"> <li>•</li> </ul>	<ul style="list-style-type: none"> <li>•</li> </ul>		<ul style="list-style-type: none"> <li>•</li> </ul>

## SECTION B – INDICATIVE TOTAL FUNDING REQUEST AND JUSTIFICATION

### 10. Project Budget and Justification

Provide the total funds sought and a breakdown of how the grant funds will be spent. A budget justification should be included for each line item. Personnel should be justified by salary level using award/university pay scales and FTE/hours. Provide details of any in-kind contribution and new leveraged investment (including source and dollar values), where applicable. Include the expenditure attributable to the leveraged partner and confirmation of support.

Total Cost <span style="float: right;">\$</span>

## SECTION C – PROJECT TEAM

### 11. Chief Investigators and Associate Investigators

Please complete all fields for a maximum of 10 CIs and a maximum of 5 AIs.

#### **Chief Investigator A**

Full name (including title)	
Early-Mid Career Researcher	<input type="checkbox"/> Yes <input type="checkbox"/> No
Primary institutional affiliation	
Email	

#### **Chief Investigators**

Full name (including title)	
Early-Mid Career Researcher	<input type="checkbox"/> Yes <input type="checkbox"/> No
Primary institutional affiliation	
Email	

<Add more rows as needed>

**Associate Investigators**

Full name (including title)	
Early-Mid Career Researcher	<input type="checkbox"/> Yes <input type="checkbox"/> No
Primary institutional affiliation	
Email	

<Add more rows as needed>

## SECTION D – APPLICANT(S) DECLARATION

### 12. Approval and Sign-off

The Chief Investigator A confirms that the information provided is correct, that all team members have reviewed and approved the submission and collaborations across platforms and clinical themes have included coproduction principles that align with the mission and activities of groups.

#### Chief Investigator A

Full Name			
Signature		Date	

## SECTION E – CHECKLIST

- Application does not exceed word count and page limits
- Budget does not exceed matched contributions up to \$200,000
- Chief Investigator A have approved the submission on behalf of the team
- Collaborating Platforms and/or Clinical Themes have endorsed the submission