

Our program offers referrals to other services:

- General Practitioner (Thursdays)
- Early Childhood & Paediatric clinics
- Naturopath
- Psychologist
- Mental health
- Drug and alcohol
- Sexual health
- Centrelink
- Legal Aid
- Social worker
- Housing

Group programs:

- Smoking cessation
- Health education
- Nutrition
- Exercise
- Chronic kidney disease support

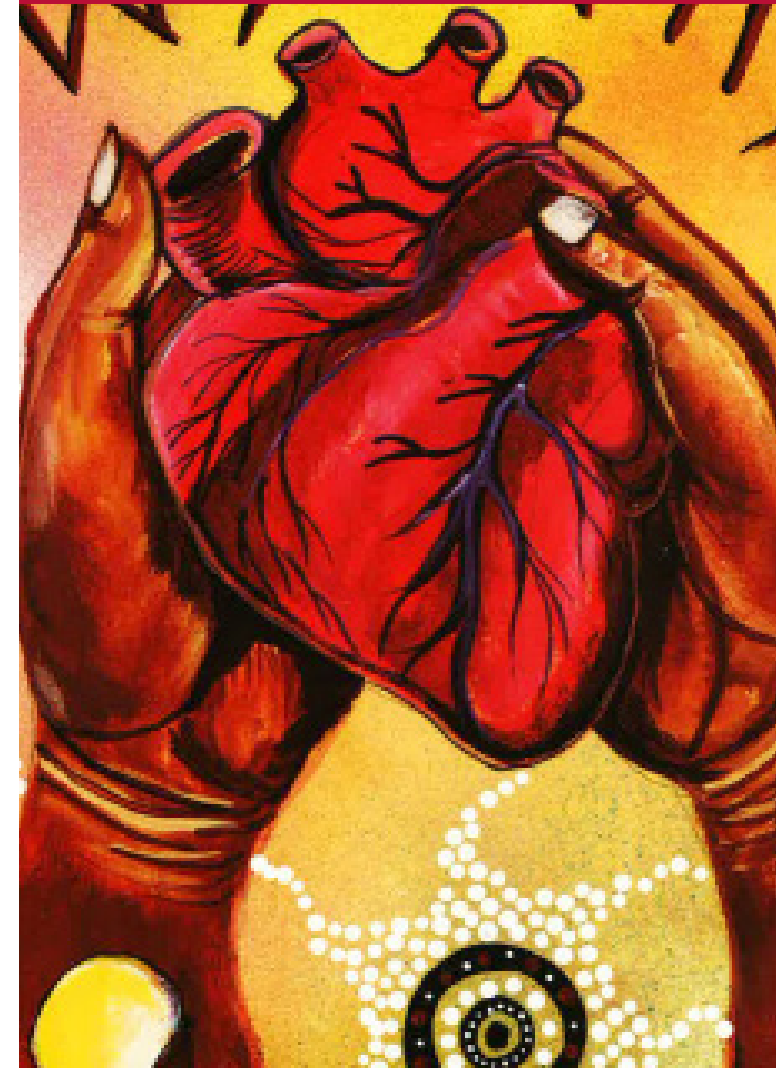
Budyari Aboriginal Community Health Centre

18 Woodward Crescent, Miller
Phone: 8781 8020
Fax 9608 0701

Opening Hours
Monday - Friday
9:00am - 4:00pm
Closed for lunch
1:00 - 2:00pm



**Marrin - Geen
Aboriginal
Chronic Care Program**



'Marrin - Geen' is from the Wiradjuri language and means body and heart.

Marrin - Geen - Aboriginal Chronic Care Program has been operating at Miller Community Health Centre since 2002 for Aboriginal people living in south western Sydney.

Aims:

To provide holistic and culturally appropriate health care to Aboriginal and Torres Strait Islander people living with a chronic disease.

Objectives

- To increase early detection and intervention
- To improve health outcomes/lifestyles
- Increase knowledge and awareness through education of the risk factors associated with chronic disease
- Work in partnerships with Gandangara Health Services, GPs and other health care providers.



Our monthly clinics are held with the following specialist services:

- Diabetes specialist (Endocrinologist)
- Podiatrist
- Optometrist
- Kidney specialist (Nephrologist)
- Cardiologist
- Gastroenterologist

Home visiting program

Hospital visiting

Exercise program

The Aboriginal Chronic Care Team consists of:

- Aboriginal Health workers
- Clinical nurse specialist/Diabetes educator
- Dietitian
- Clinical nurse consultant (renal)

We provide individual support and education in the management of:

- Diabetes
- High blood pressure
- Cholesterol levels
- Blood sugar levels
- Weight control
- Healthy eating patterns
- Kidney disease
- Spirometry (lung function)
- Quit smoking
- Exercise program